









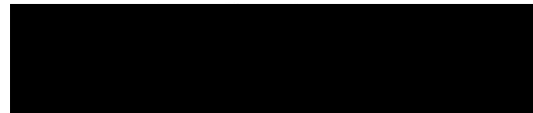


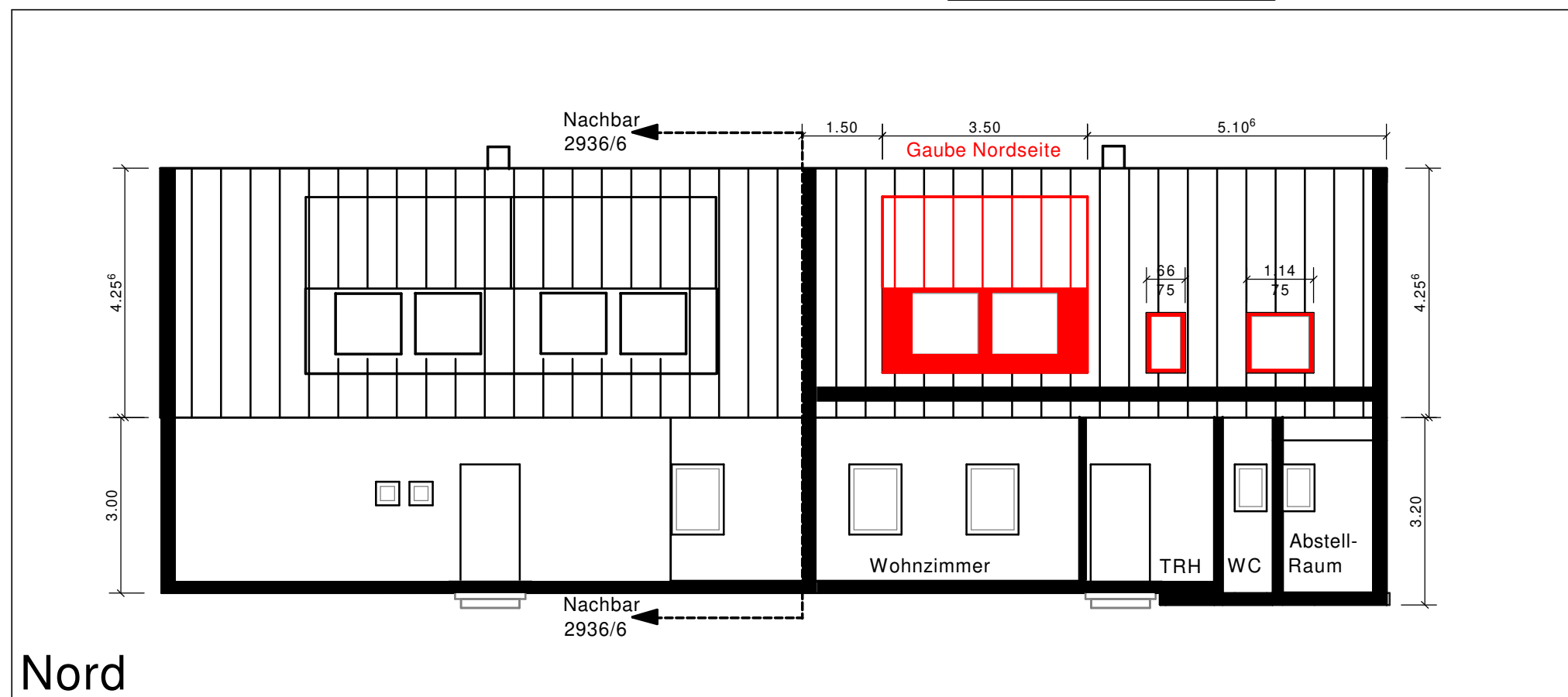
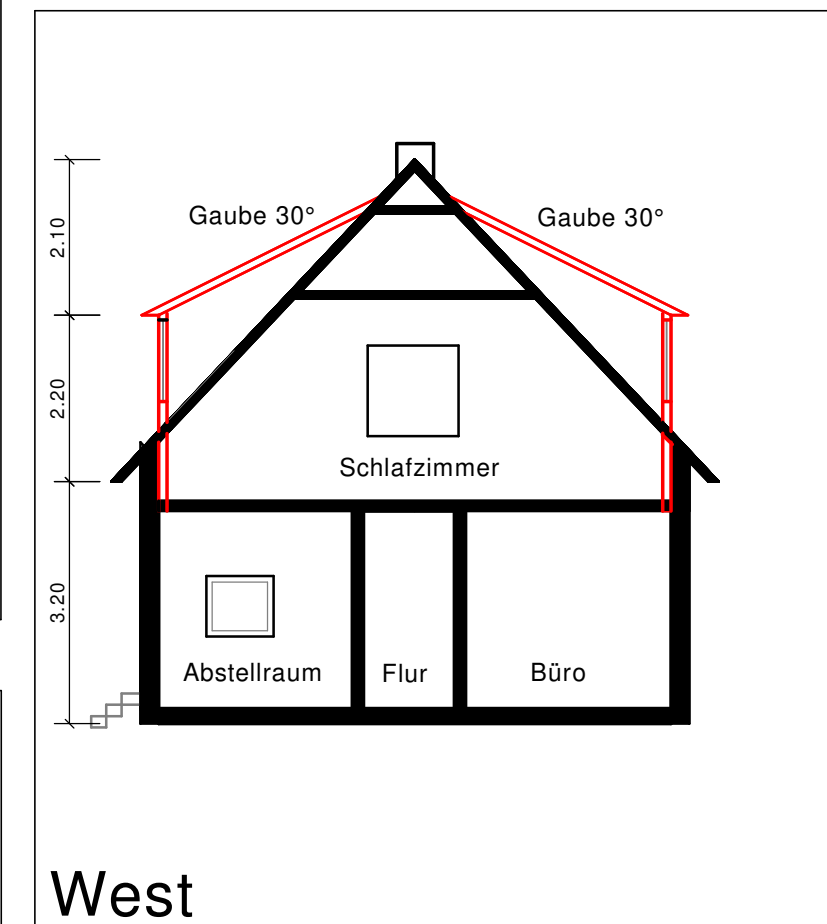
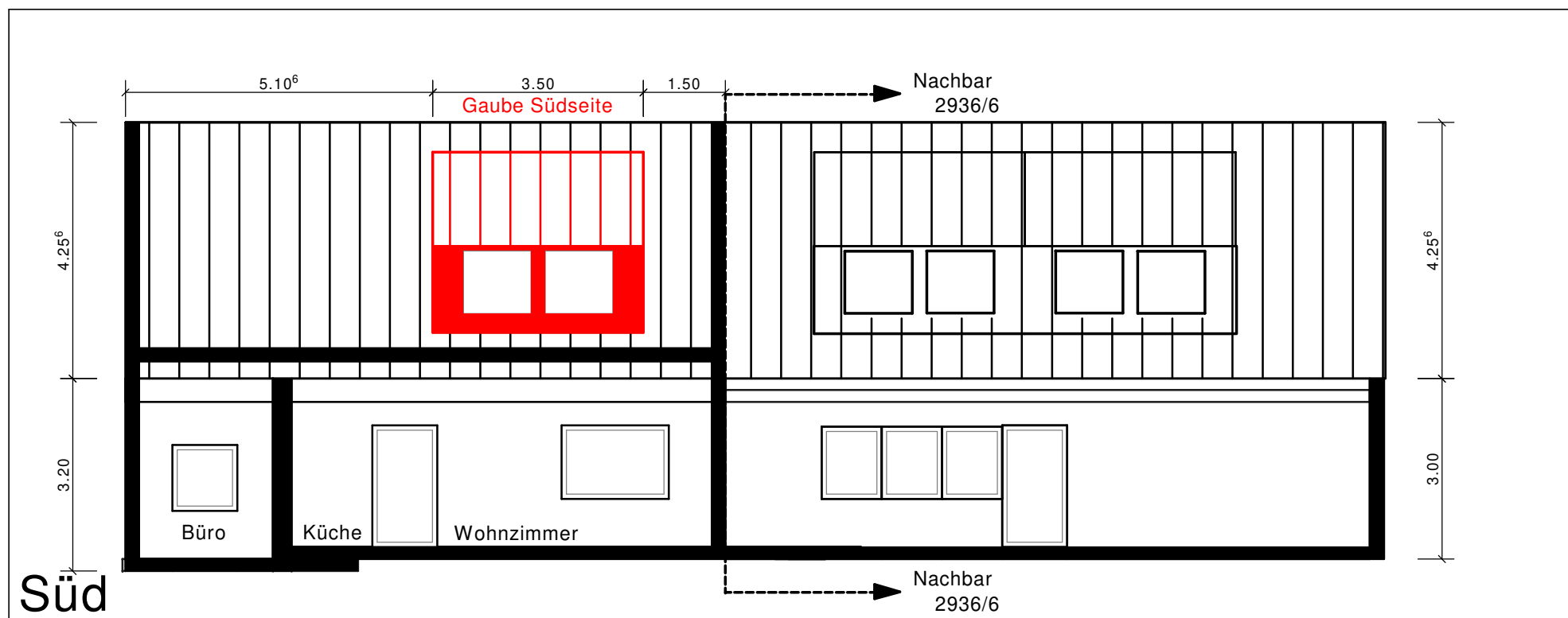
-  Grenzpunkt, hergestellt
-  Grenzpunkt erstmalig abgemarkt
-  Grenzpunkt aufgedeckt
-  Nagel / Bodenpflock mit Nagel
-  Holzpflöck
-  Grenzpunkt neu abgemarkt
-  Grenzpunkt neu unvermarkt

- Grenze bestehen bleibend 
- Grenze neu 
- Wegfallende Grenze 

Überlingen, den 14.03.2022 / 2221051



Neu █
 Bestand █



Sanierung Bernhardstr. 33 / 88677 Markdorf
 Gauben- u. Dachfensterplanung

Planstand
 22.10.2022

Masstab
 1:100

Blattformat
 DIN A3