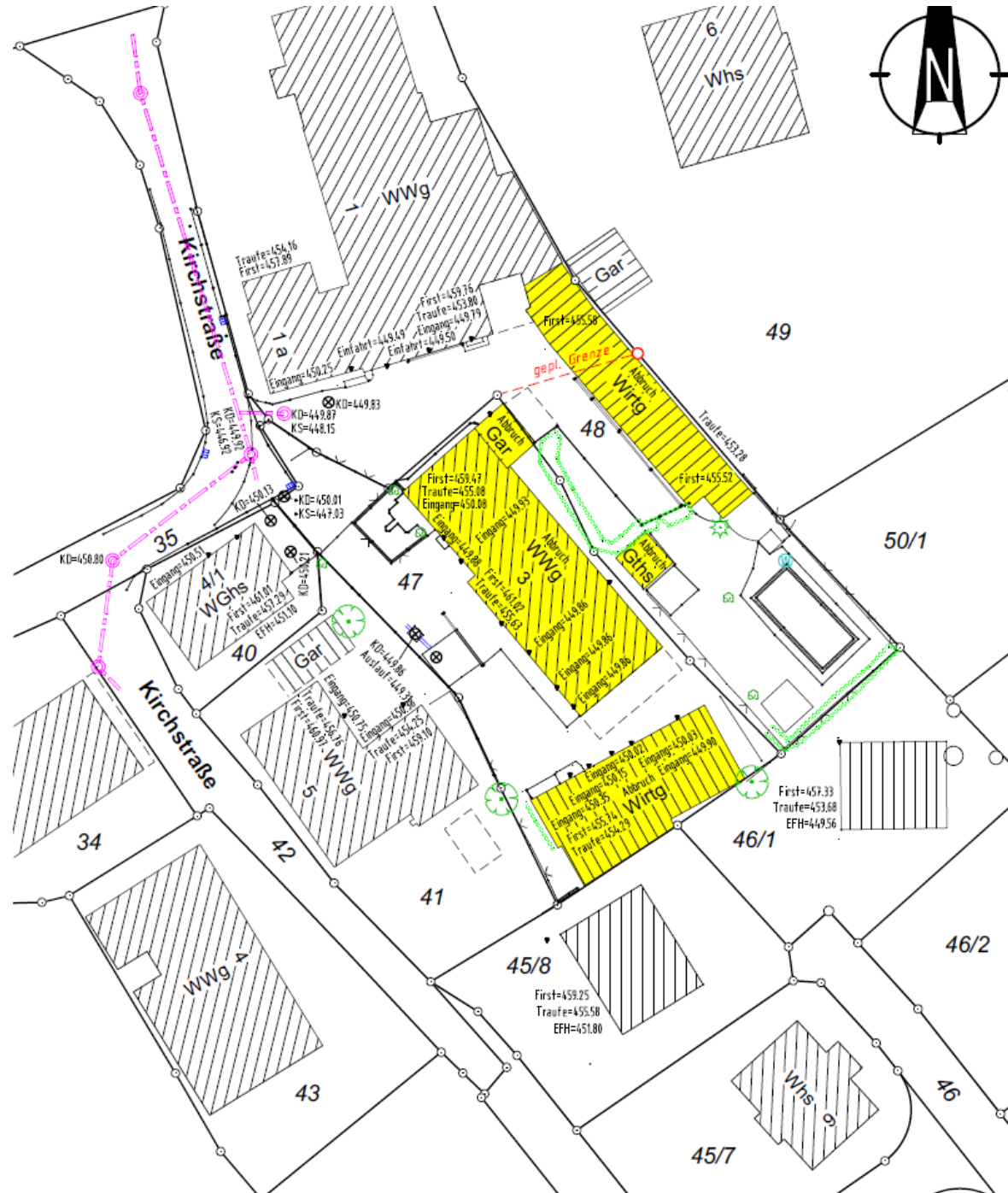


Lageplan - Abbruch

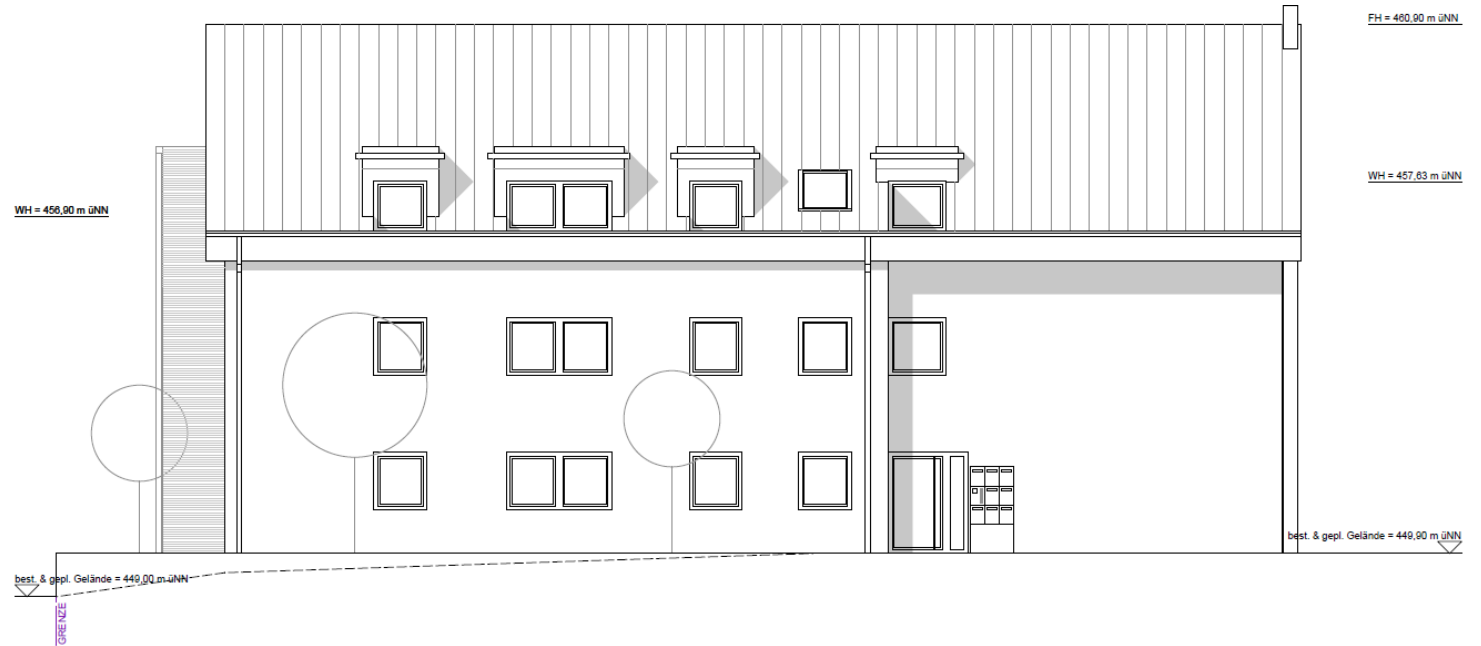


Lageplan - Neubau

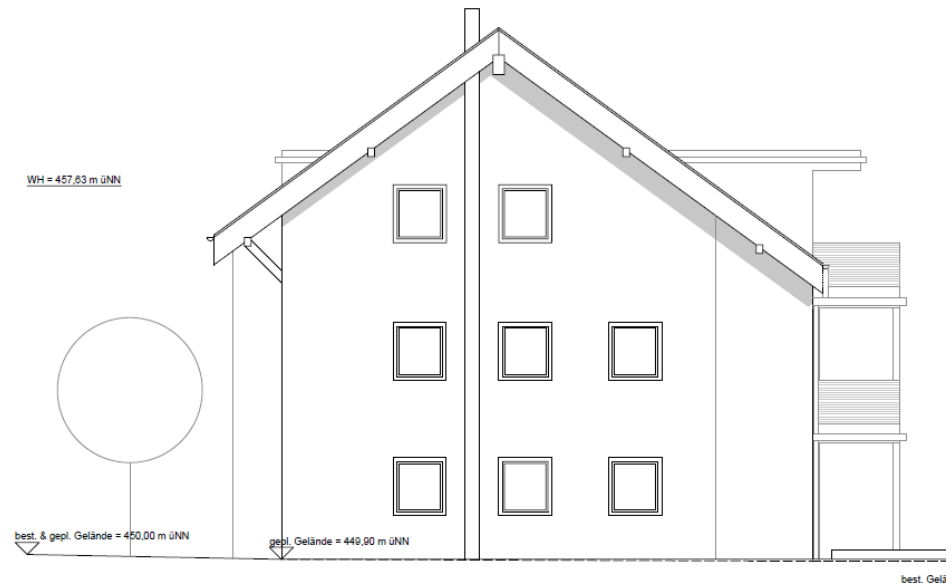


Haus A

Ansicht Nord



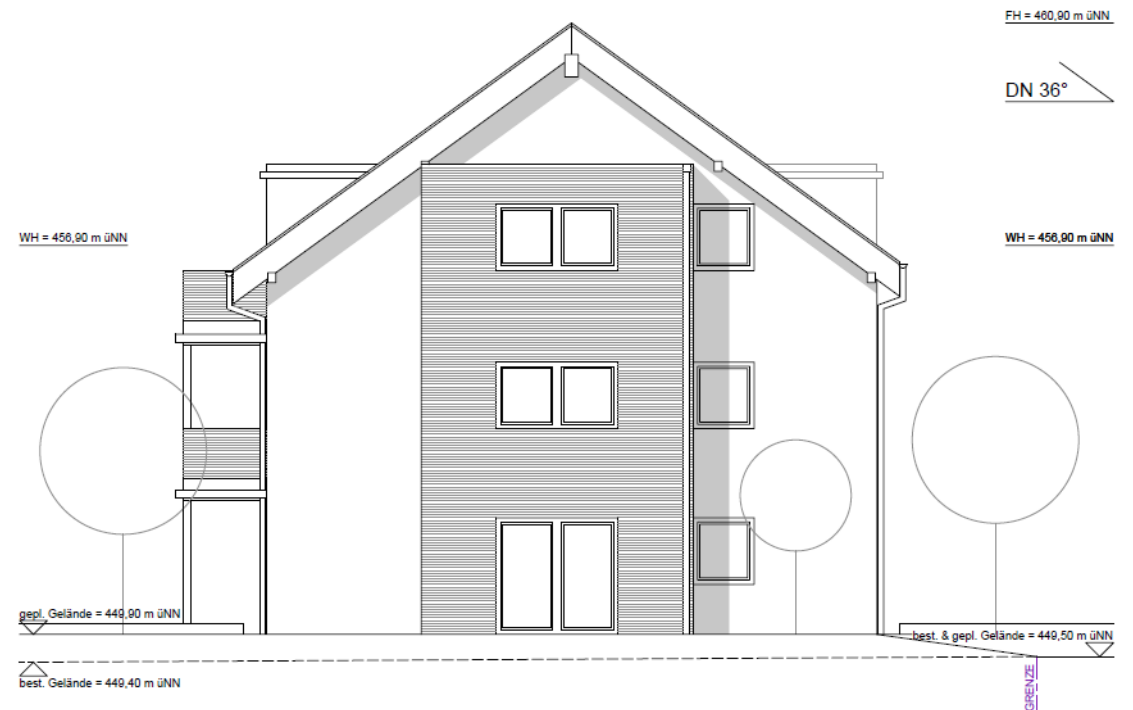
Ansicht West



Ansicht Süd



Ansicht Ost



Haus B

Ansicht West



Ansicht Süd



Ansicht Ost



Ansicht Nord



Haus C

Ansicht Nord



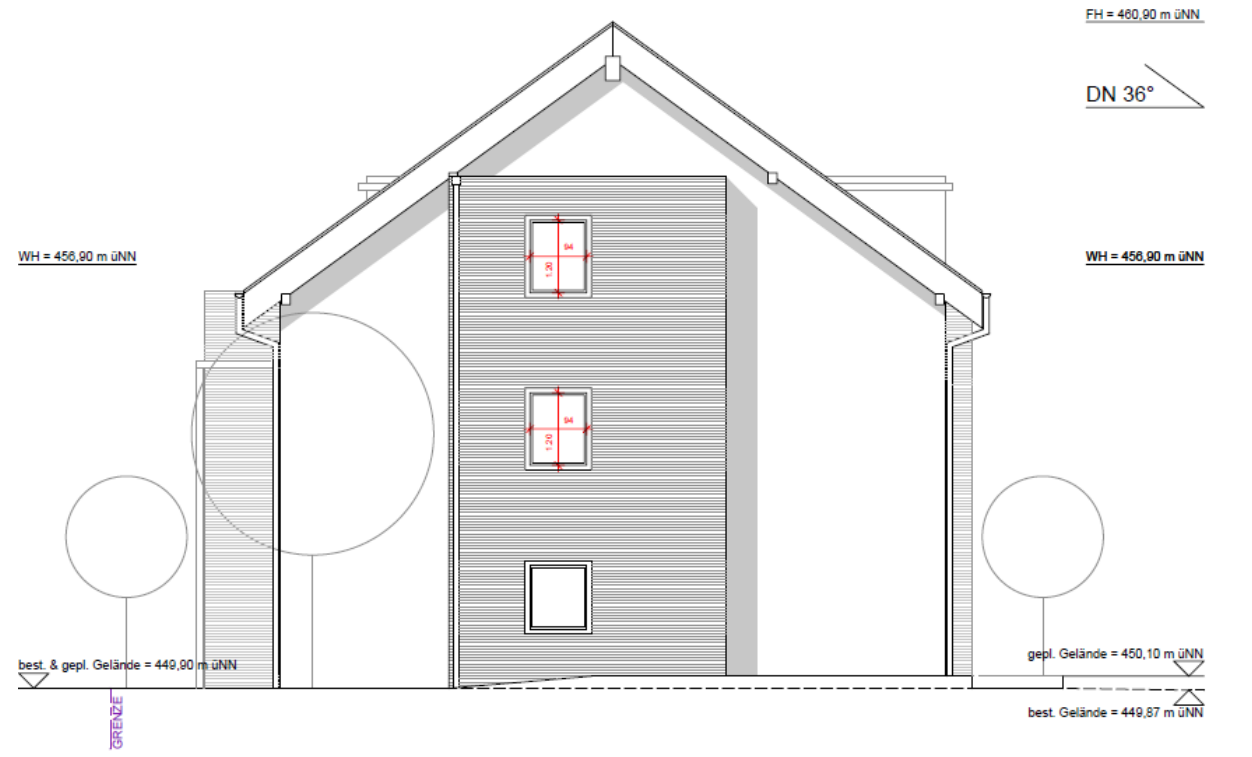
Ansicht West



Ansicht Süd

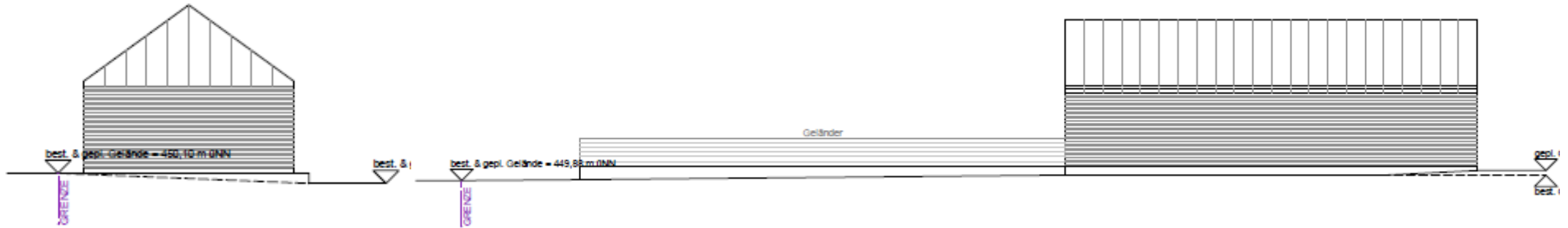


Ansicht Ost



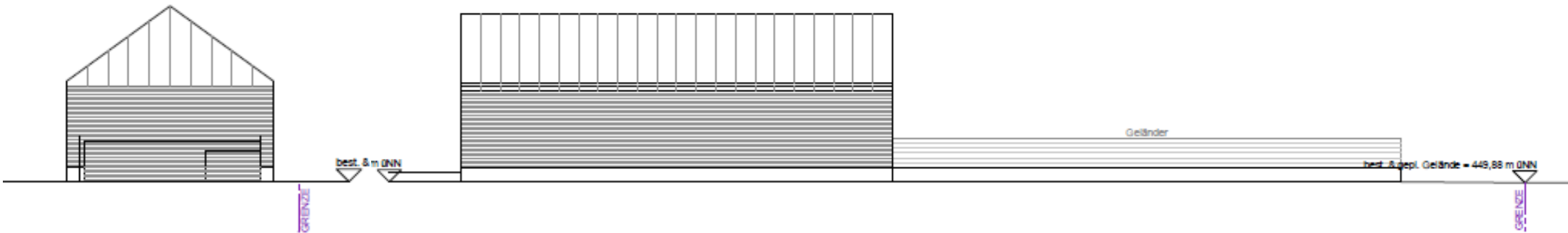
Einhausung - Ansichten

Ansicht Nord



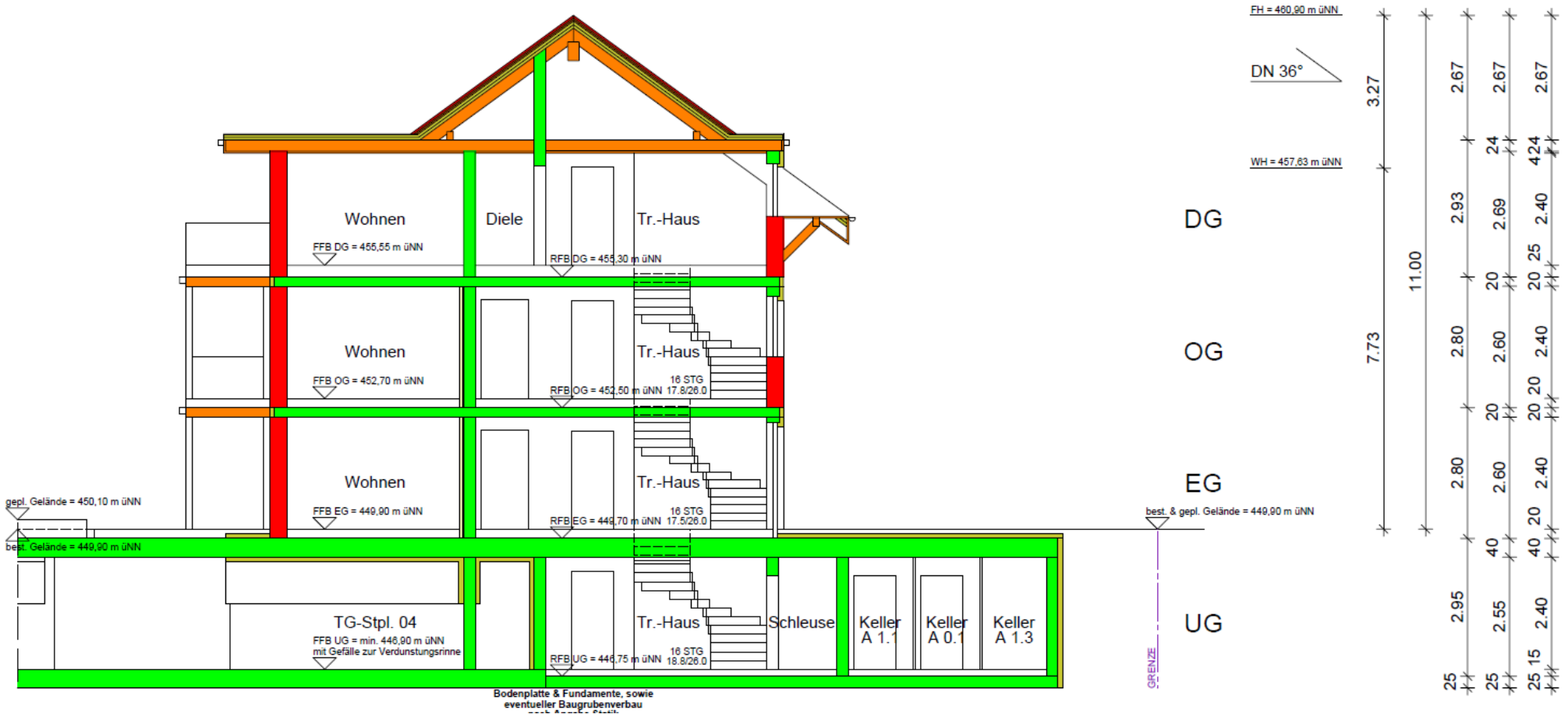
Ansicht West

Ansicht Süd

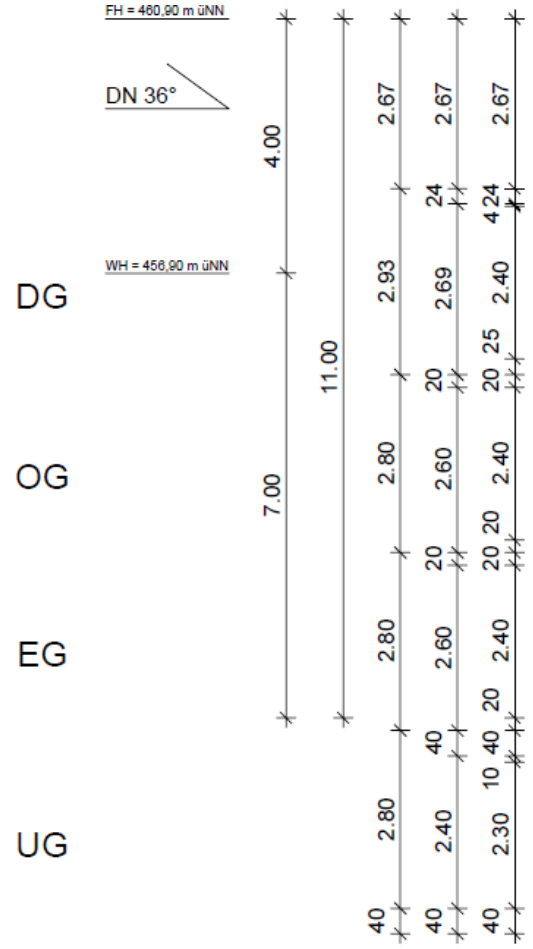
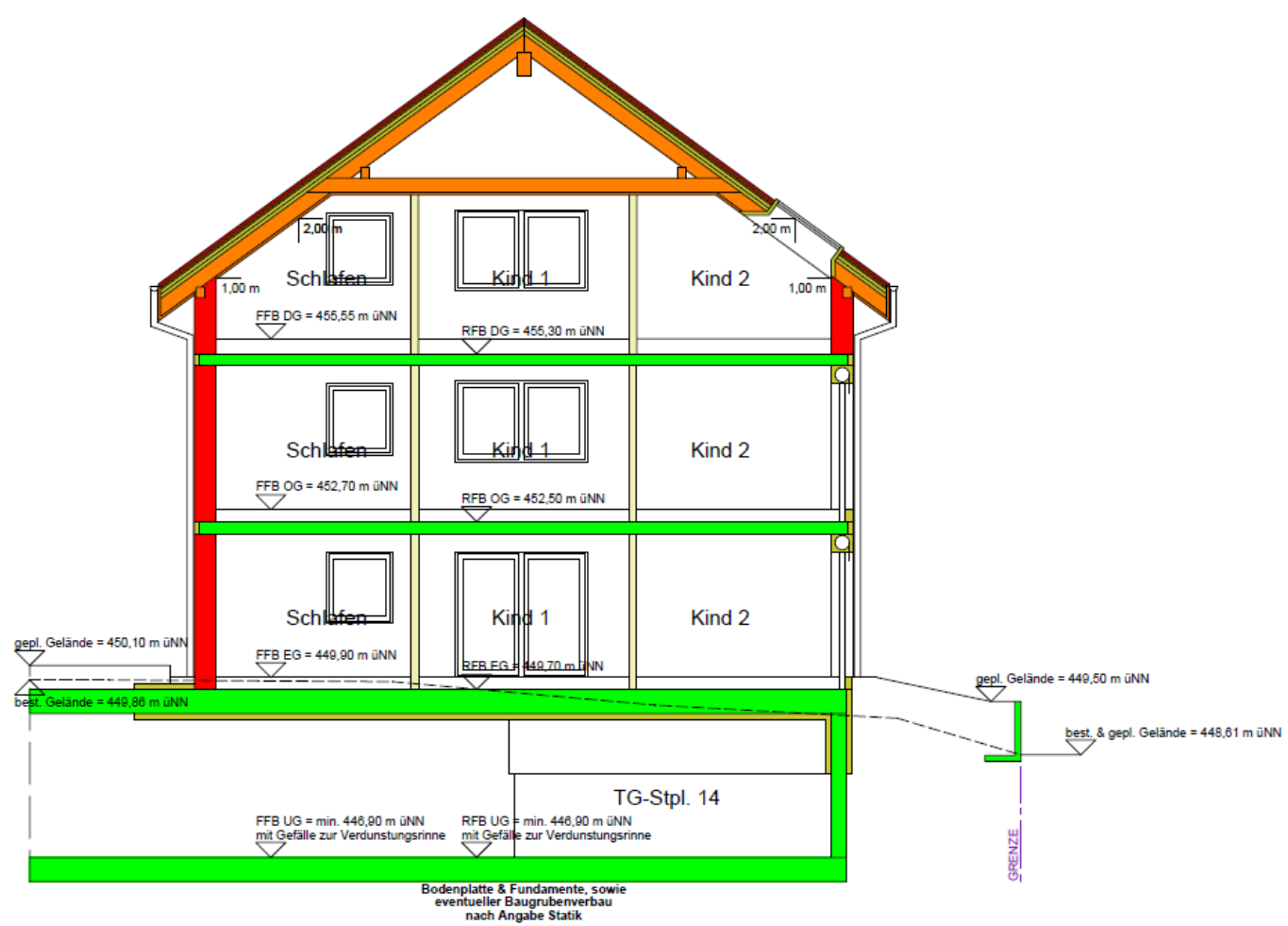


Ansicht Ost

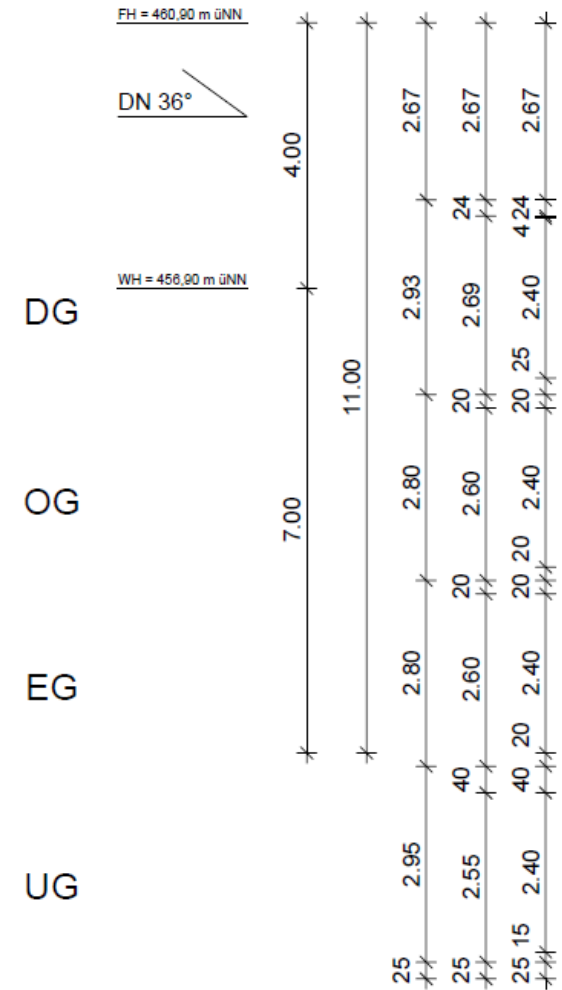
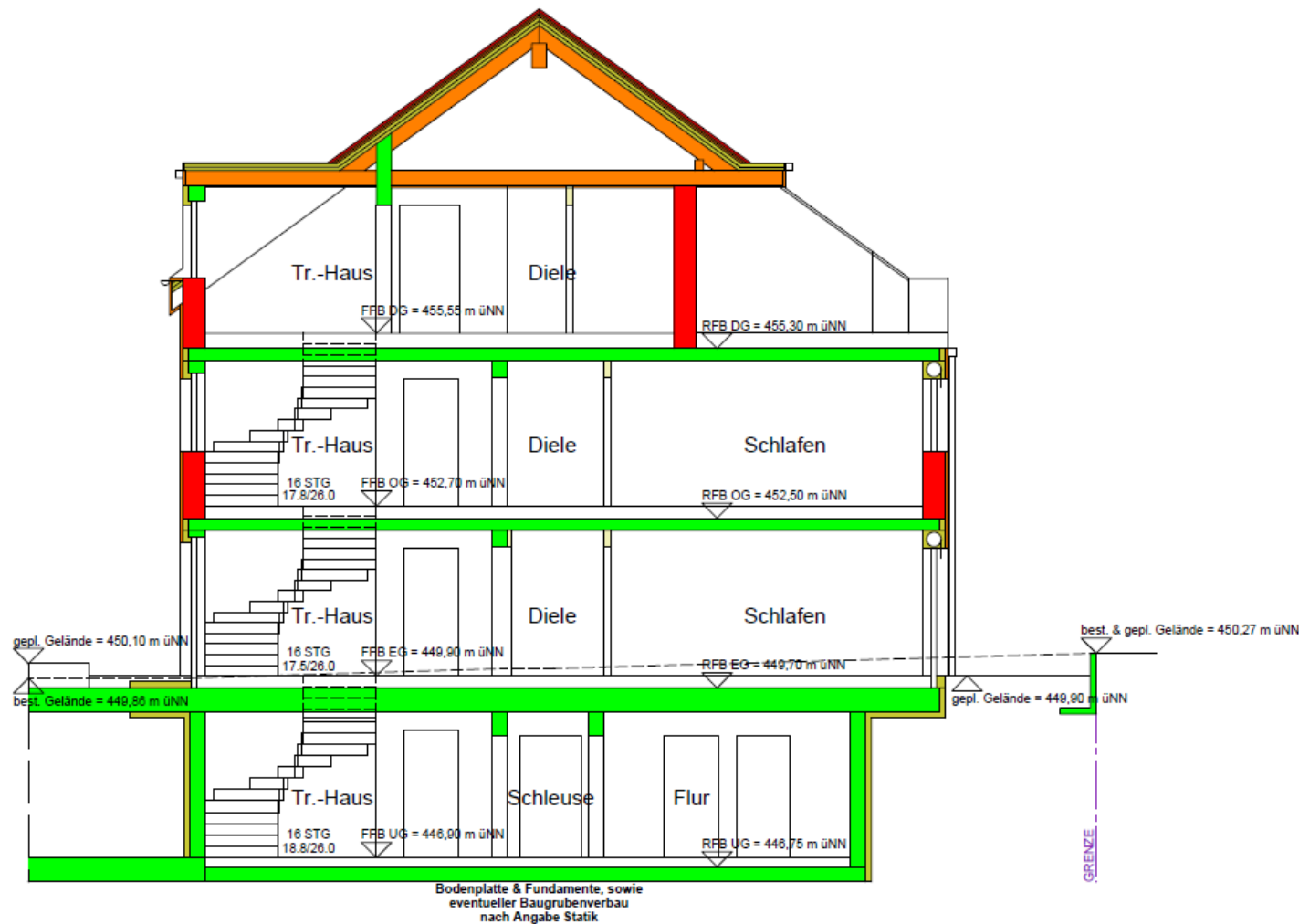
Haus A - Schnitt A1 – A1



Haus B - Schnitt B1 – B1

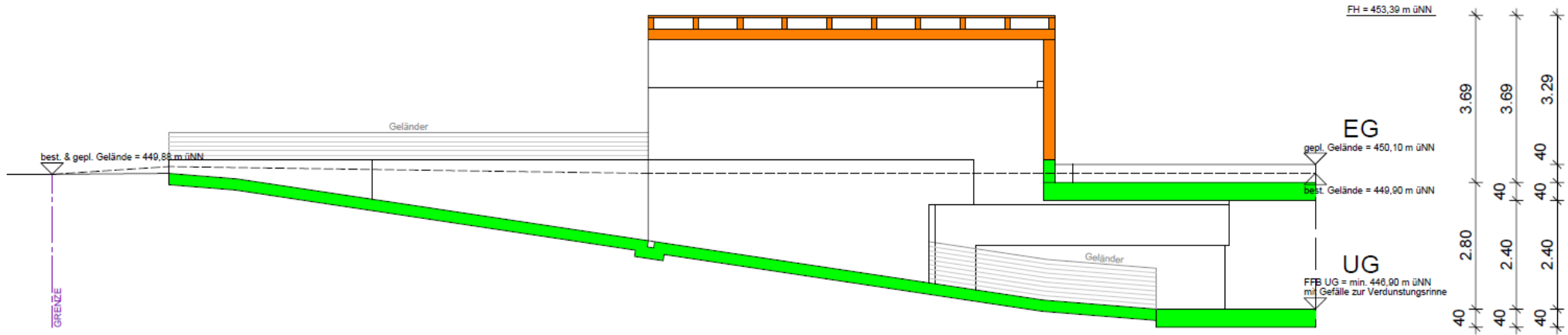


Haus C - Schnitt C1 – C1



Einhausung

Schnitt D1 – D1



Schnitt D2 – D2

