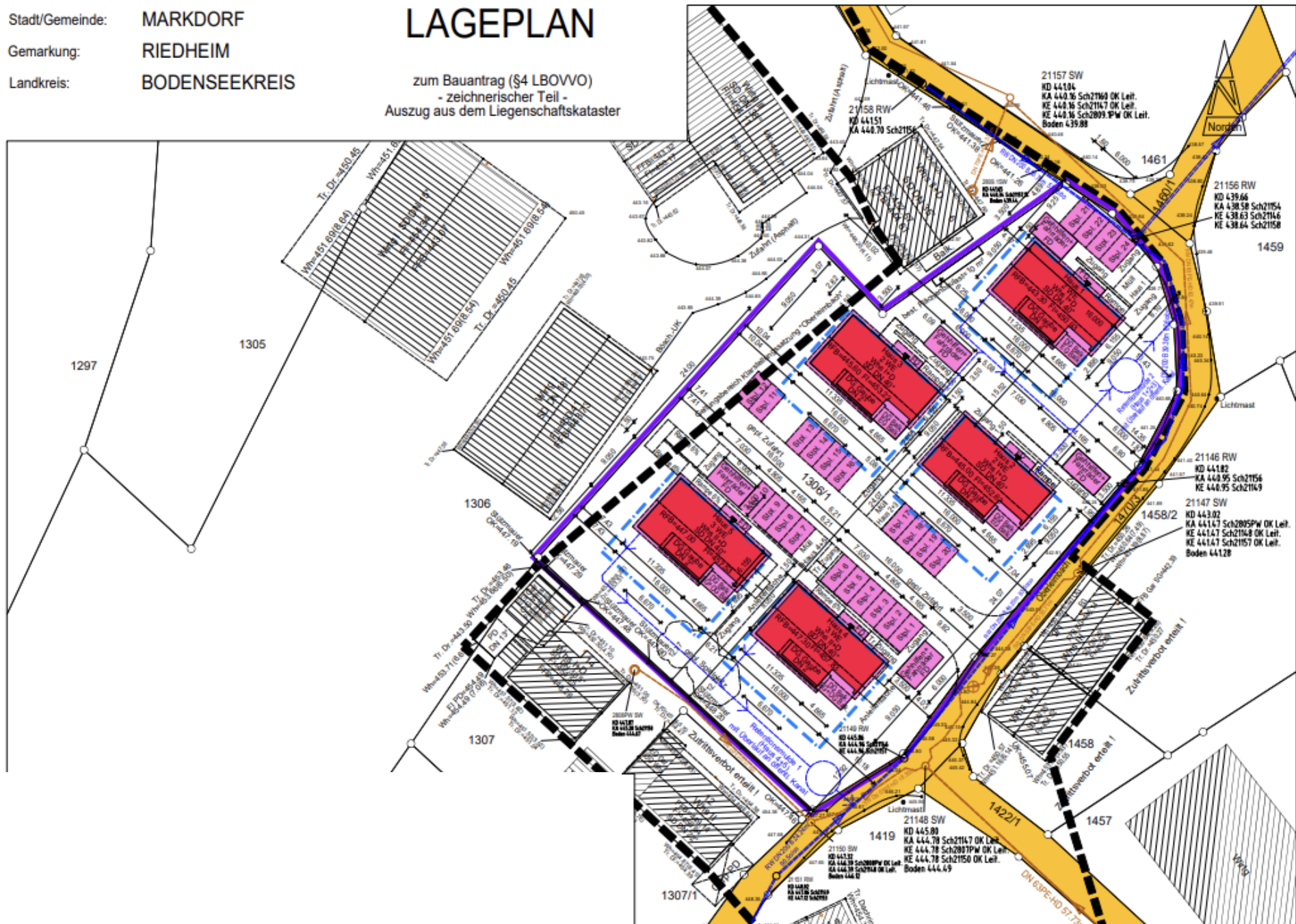


Lageplan

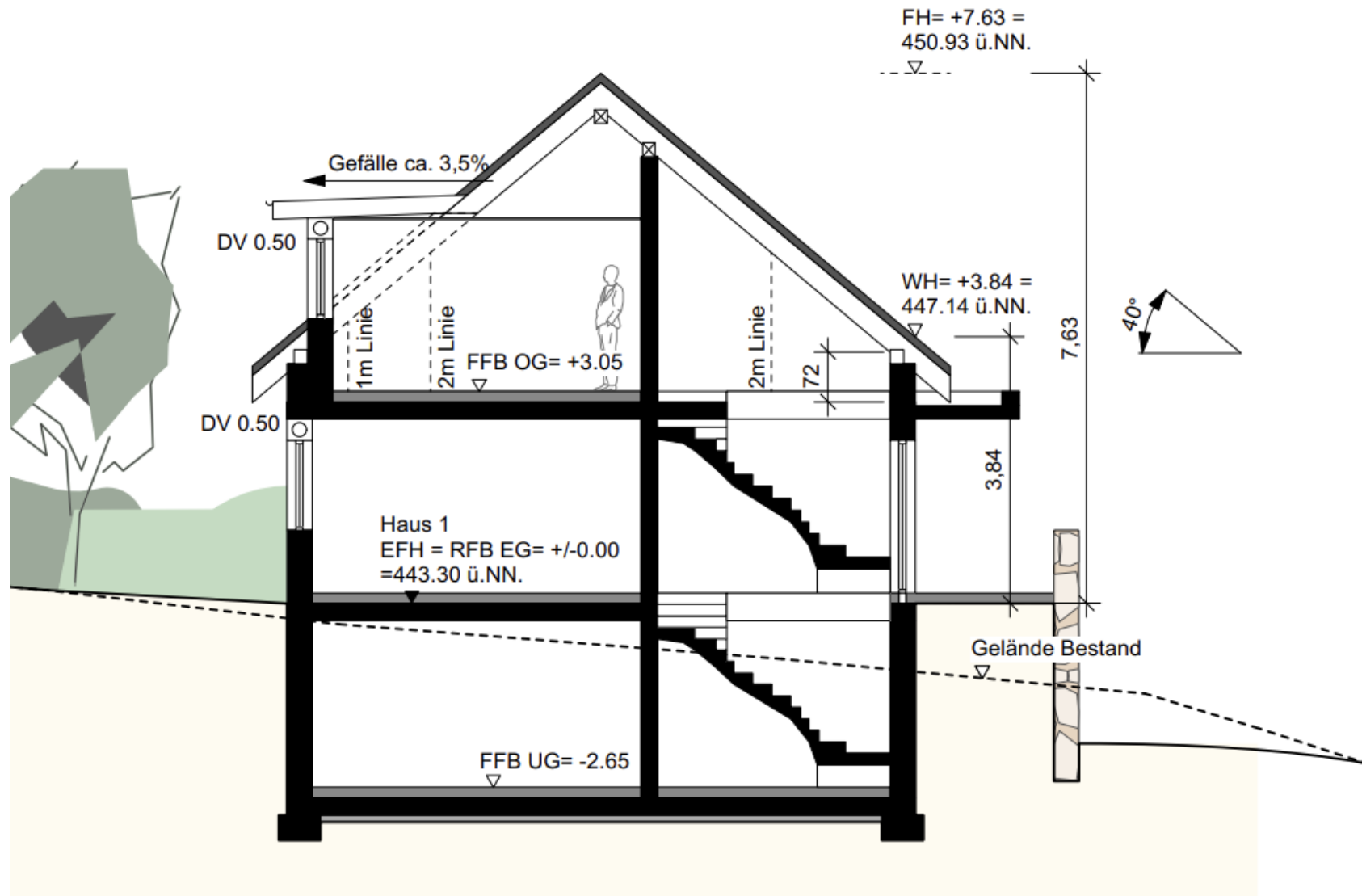
Stadt/Gemeinde: MARKDORF
Gemarkung: RIEDHEIM
Landkreis: BODENSEEKRIS

LAGEPLAN

zum Bauantrag (§4 LBOVVO)
- zeichnerischer Teil -
Auszug aus dem Liegenschaftskataster

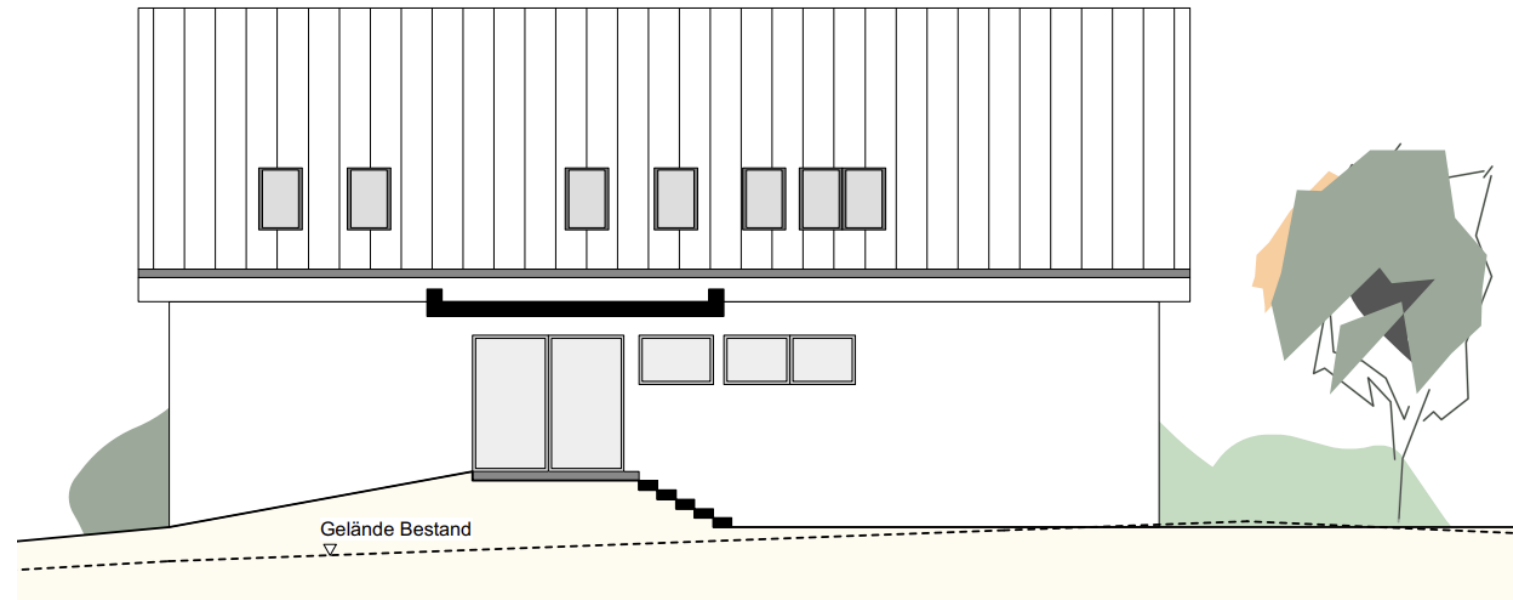


Haus 1 - Schnitt

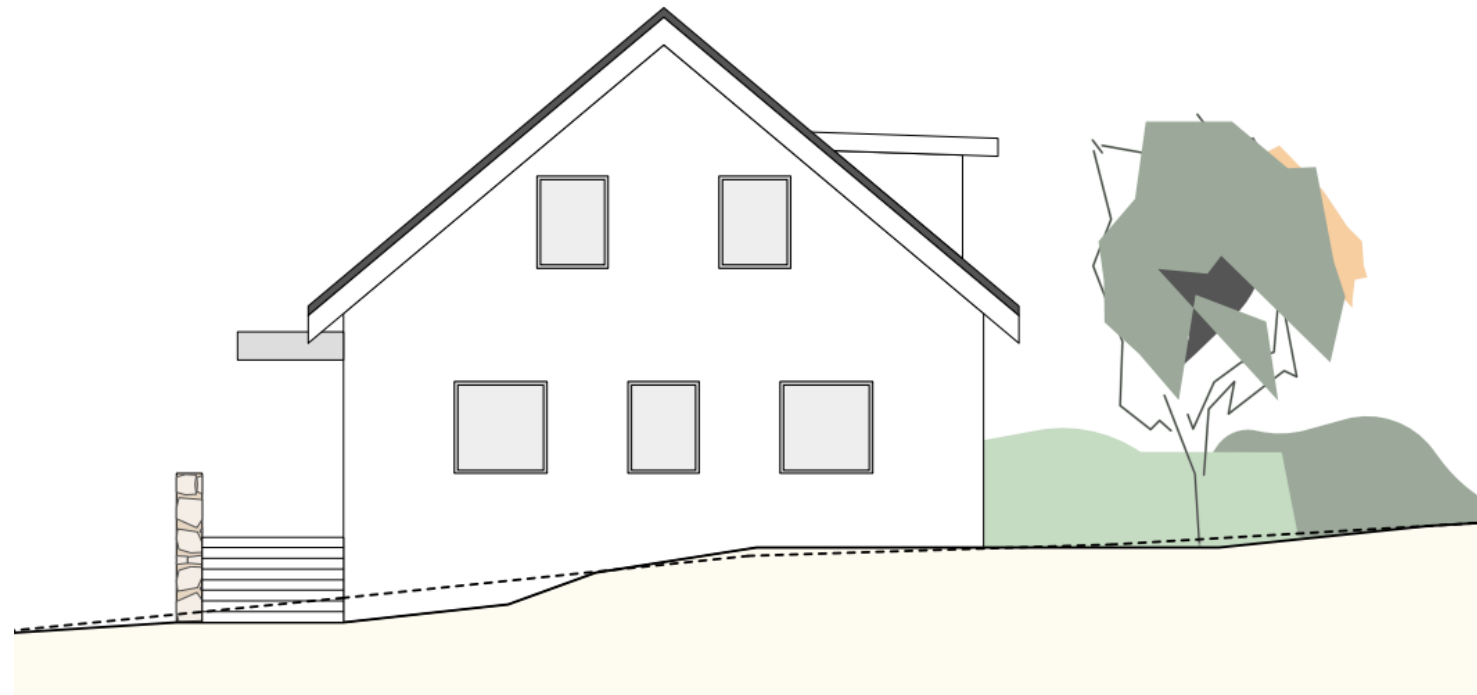


Haus 1

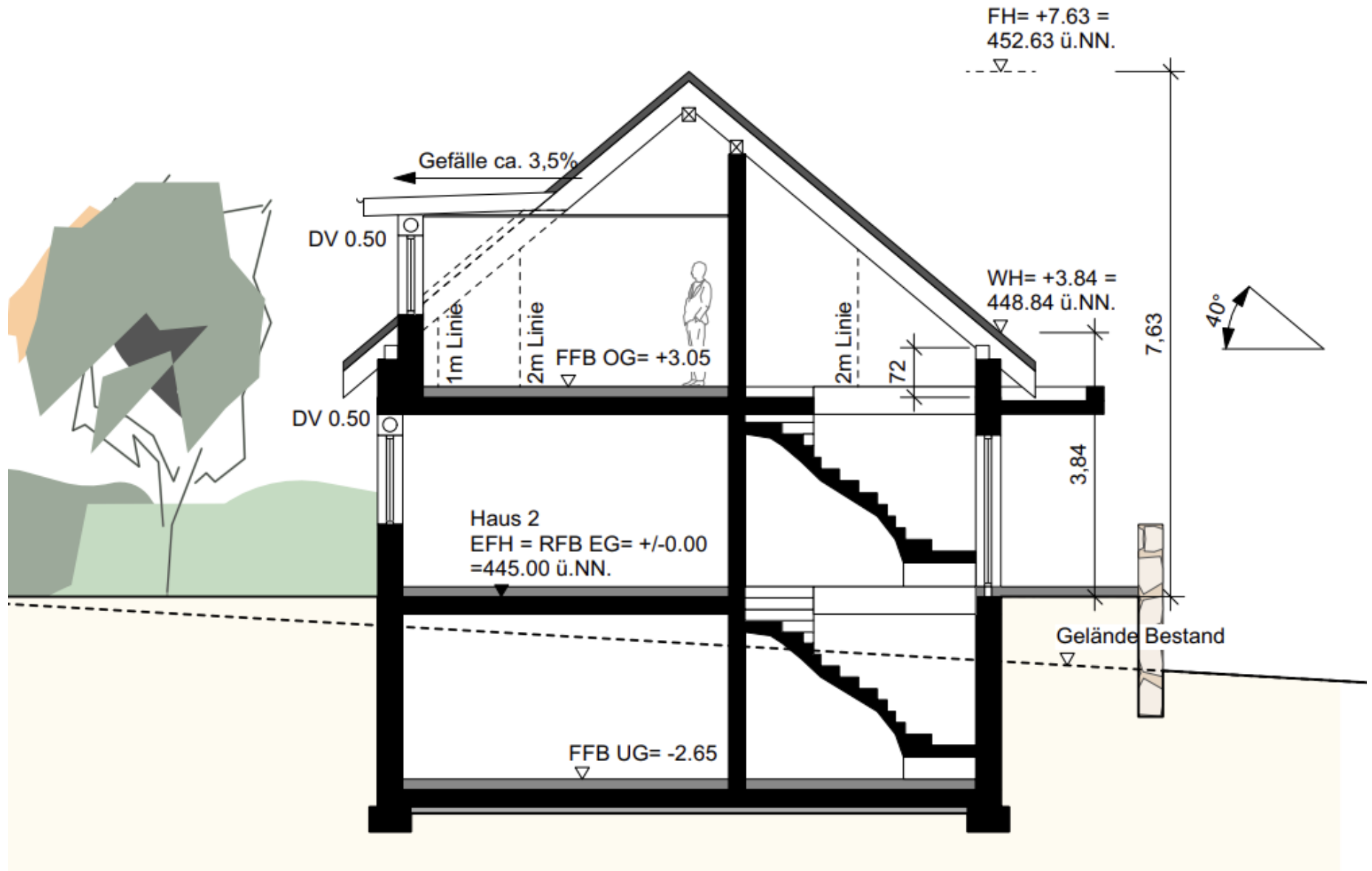
Ansicht Nord-Ost



Ansicht Nord-West

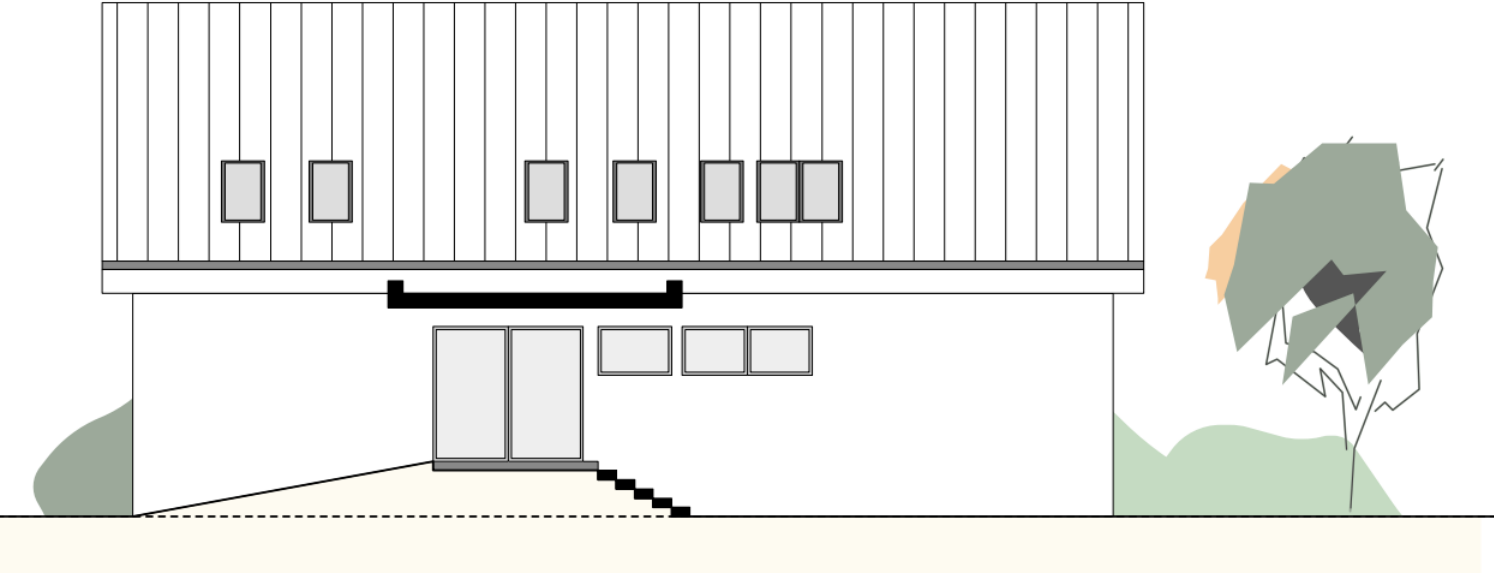


Haus 2 - Schnitt



Haus 2

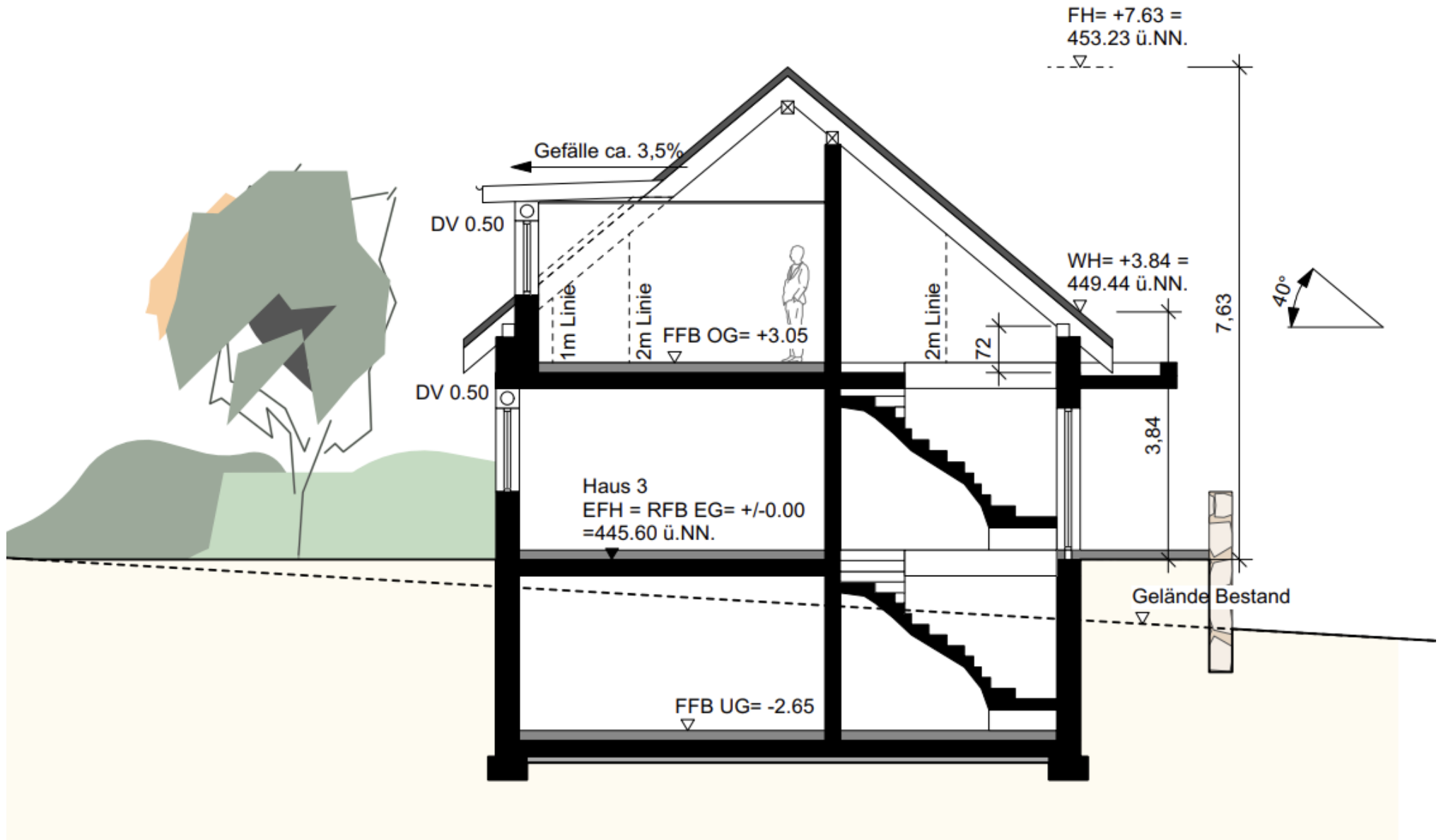
Ansicht Nord-Ost



Ansicht Nord-West

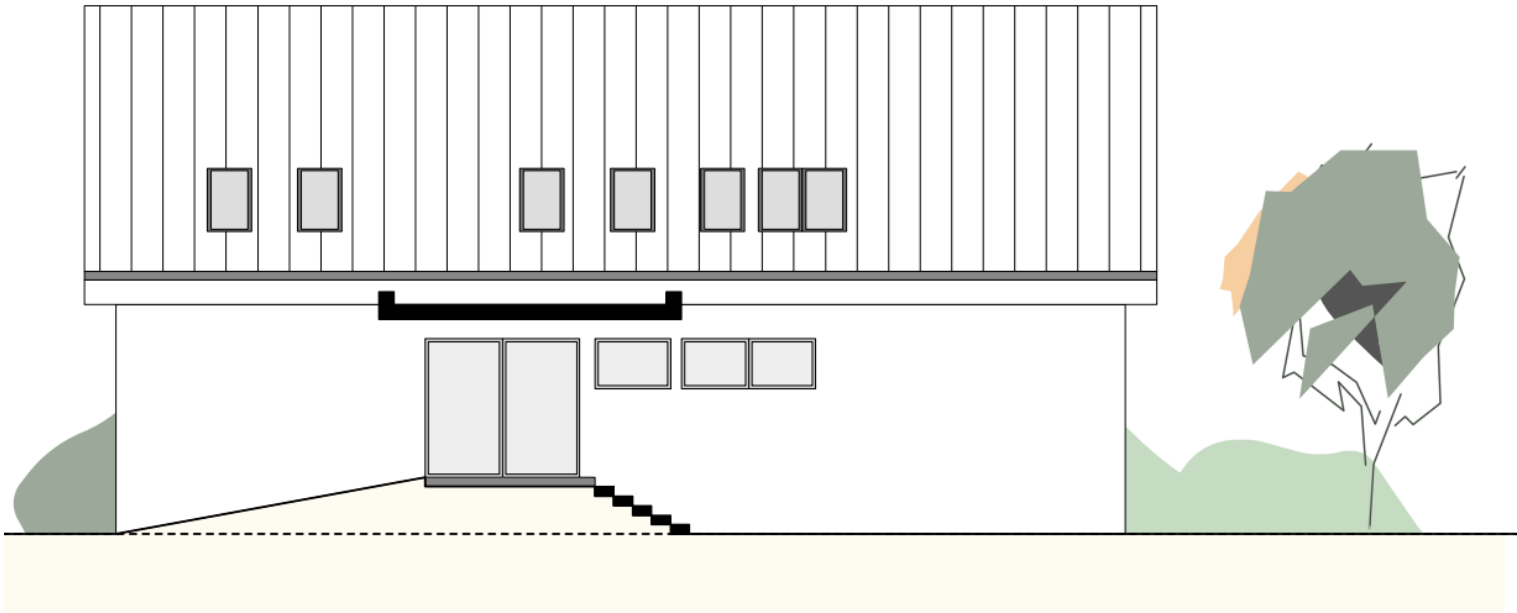


Haus 3 - Schnitt



Haus 3

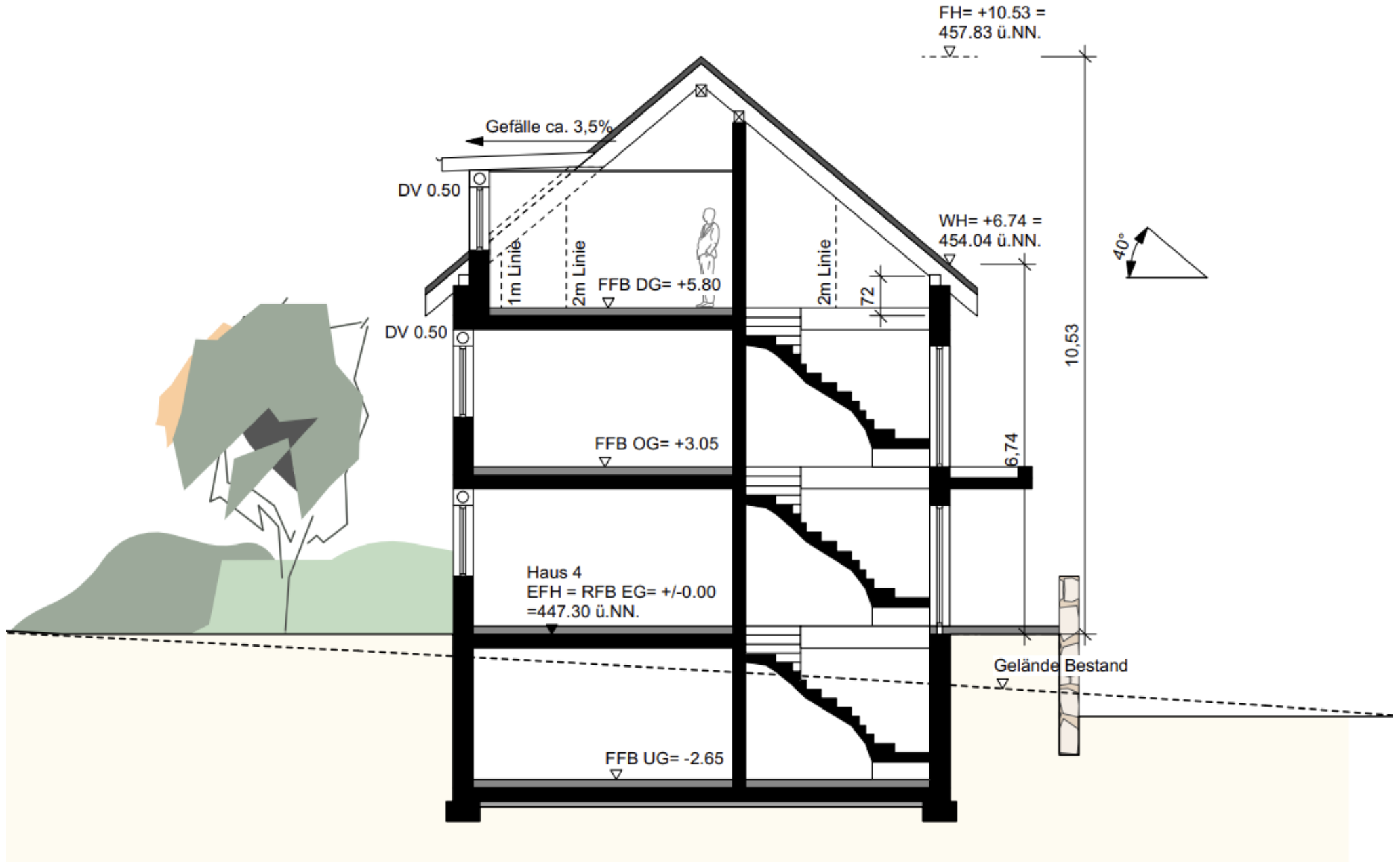
Ansicht Nord-Ost



Ansicht Nord-West

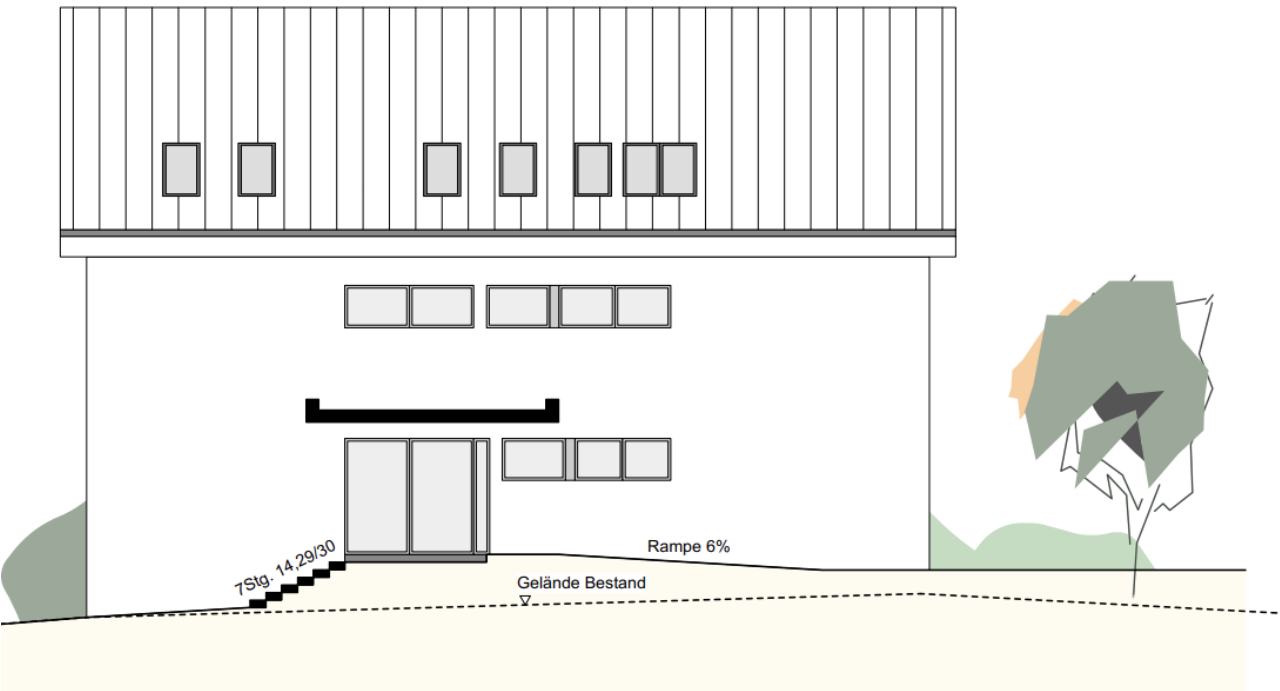


Haus 4 - Schnitt



Haus 4

Ansicht Nord-Ost

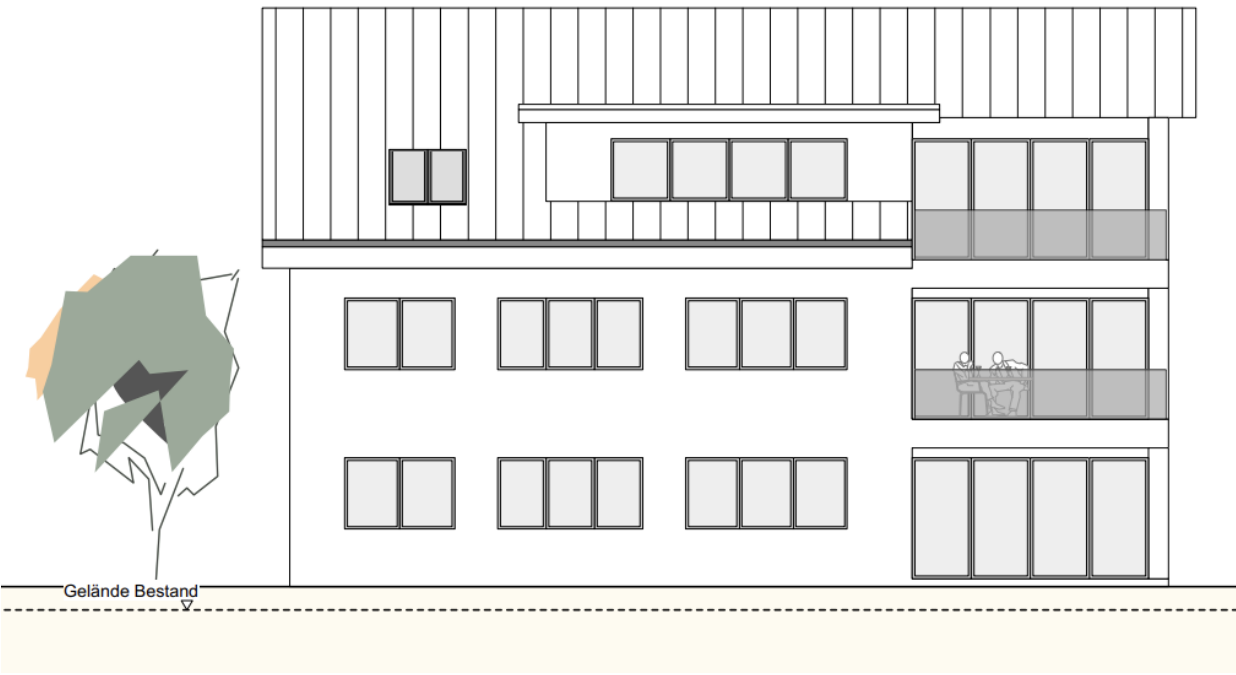


Ansicht Nord-West



Haus 4

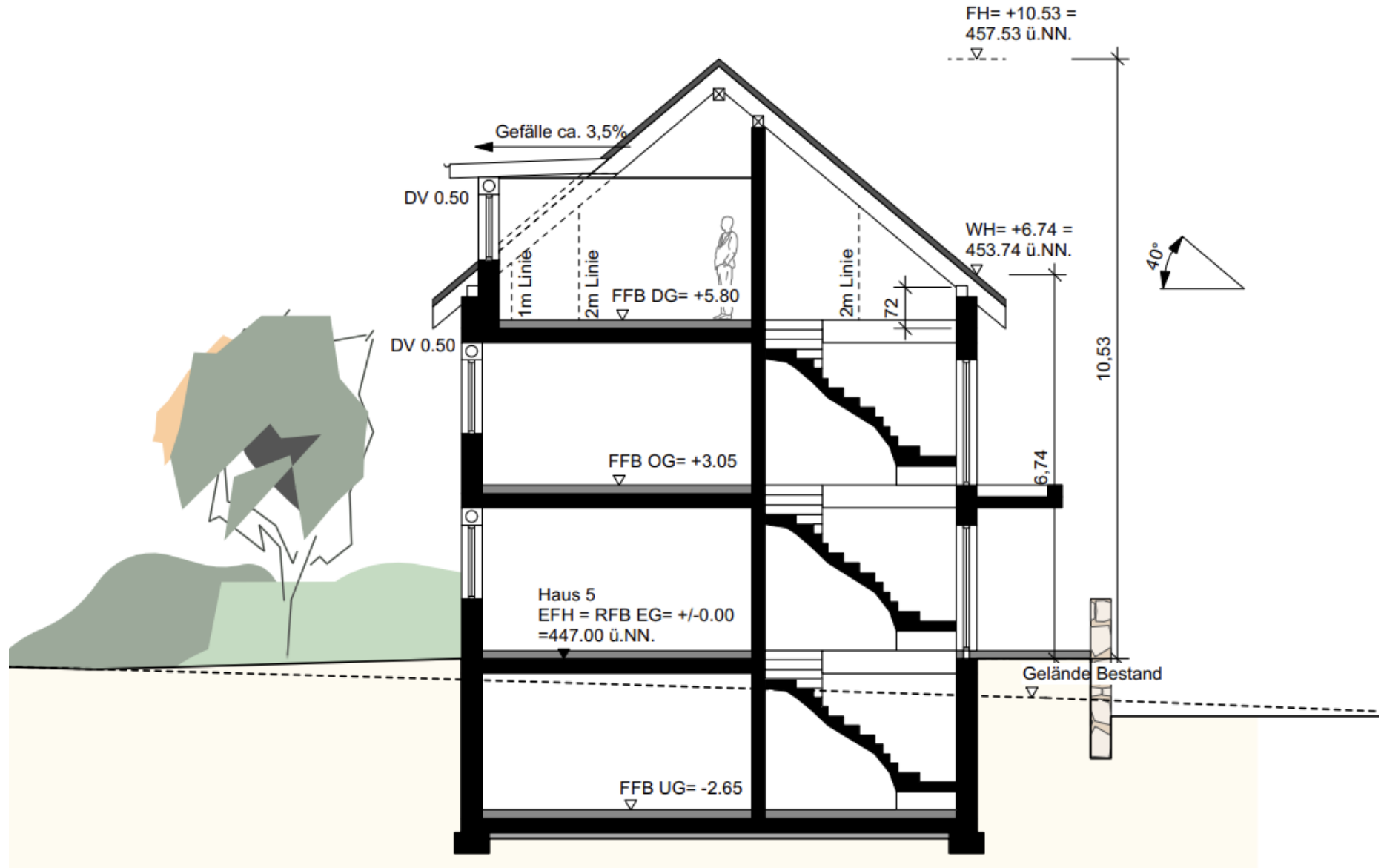
Ansicht Süd-West



Ansicht Süd-Ost

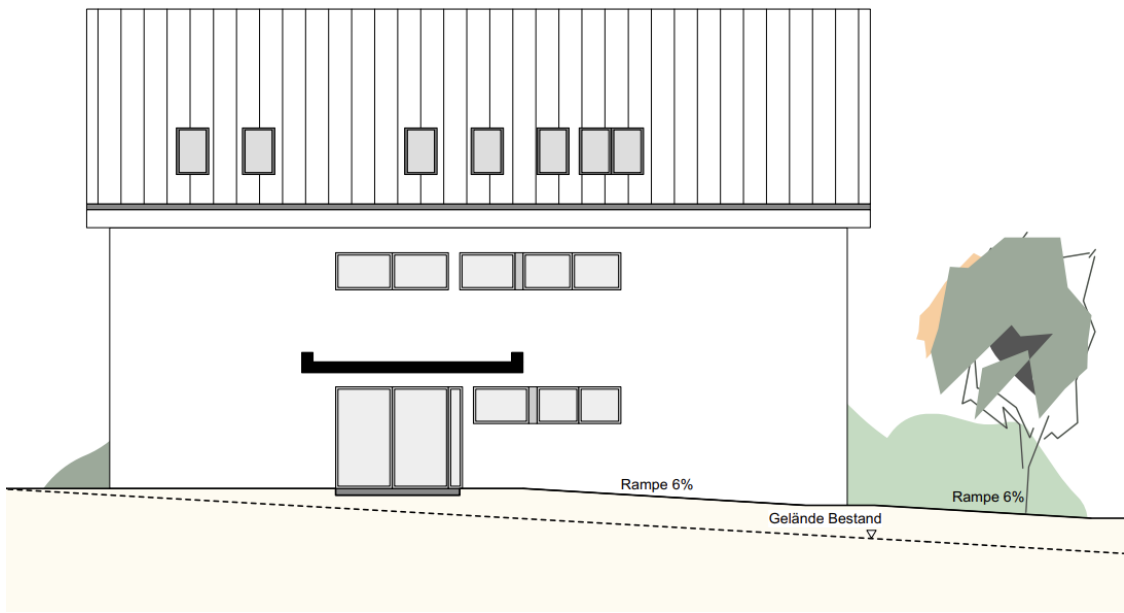


Haus 5 - Schnitt

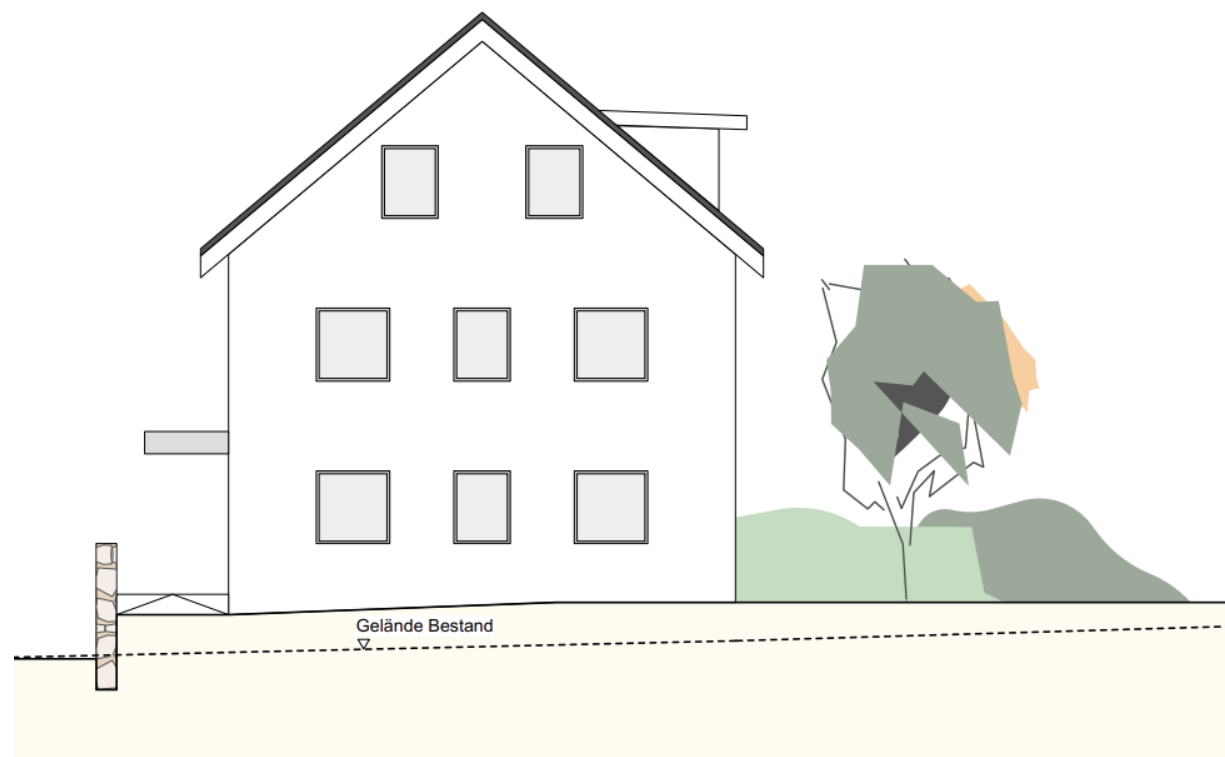


Haus 5

Ansicht Nord-Ost

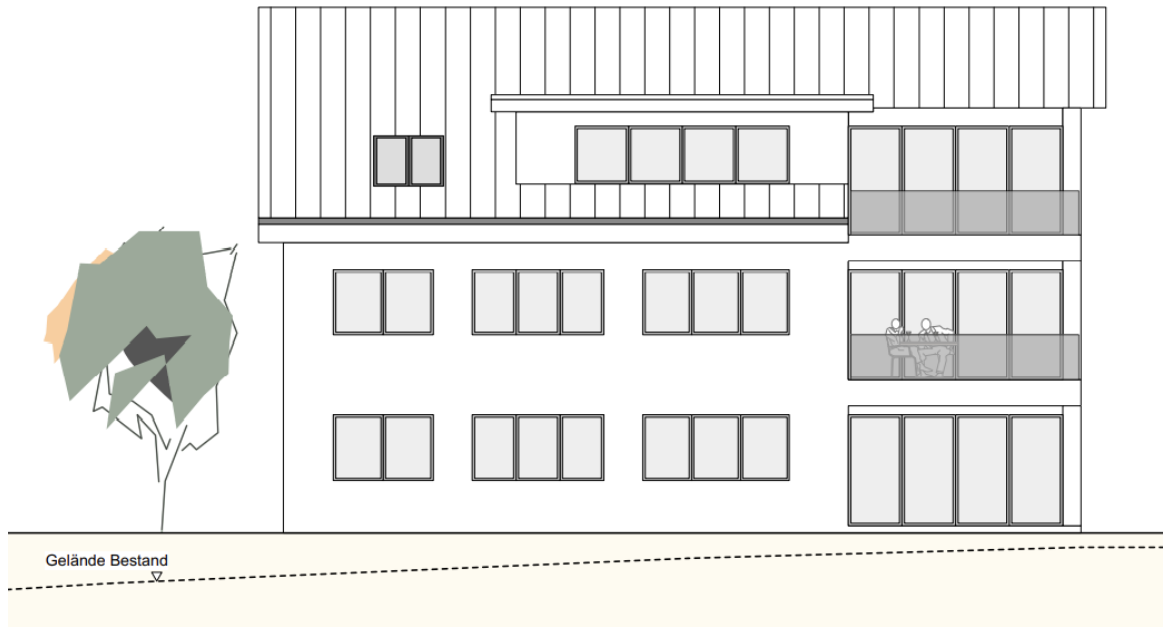


Ansicht Nord-West



Haus 5

Ansicht Süd-West



Ansicht Süd-Ost

