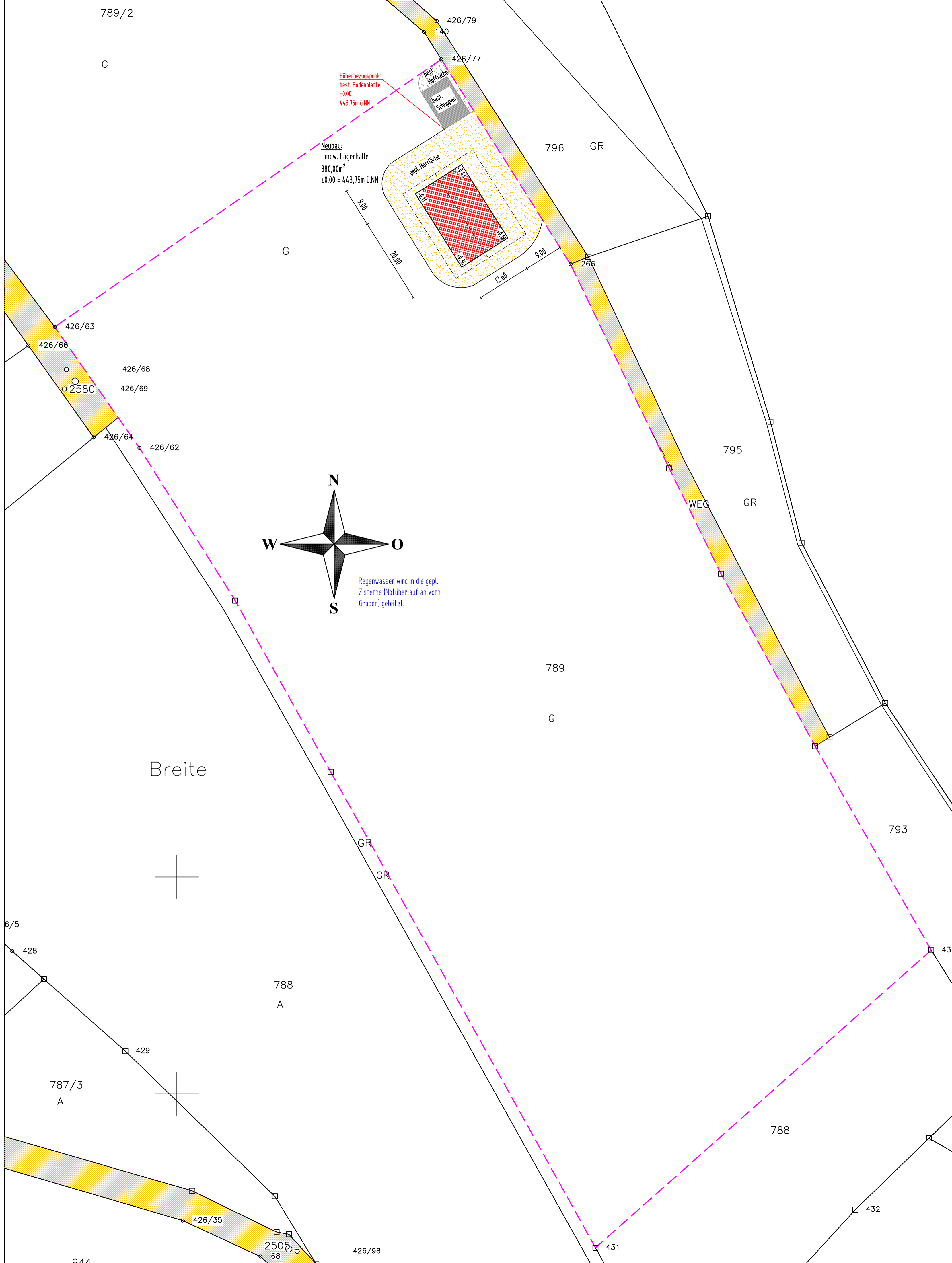


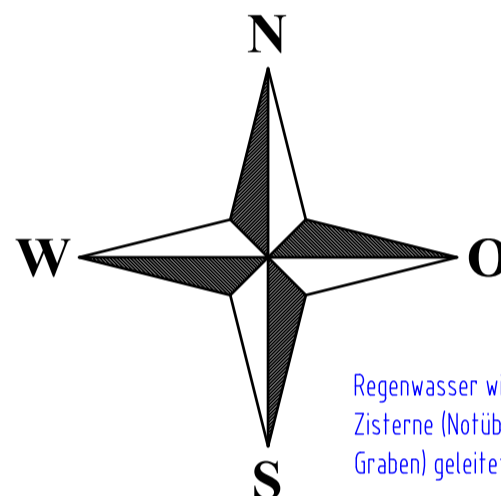
# Orthophoto





Höhenbezugspunkt  
best. Bodenplatte  
±0.00  
443,75m üNN

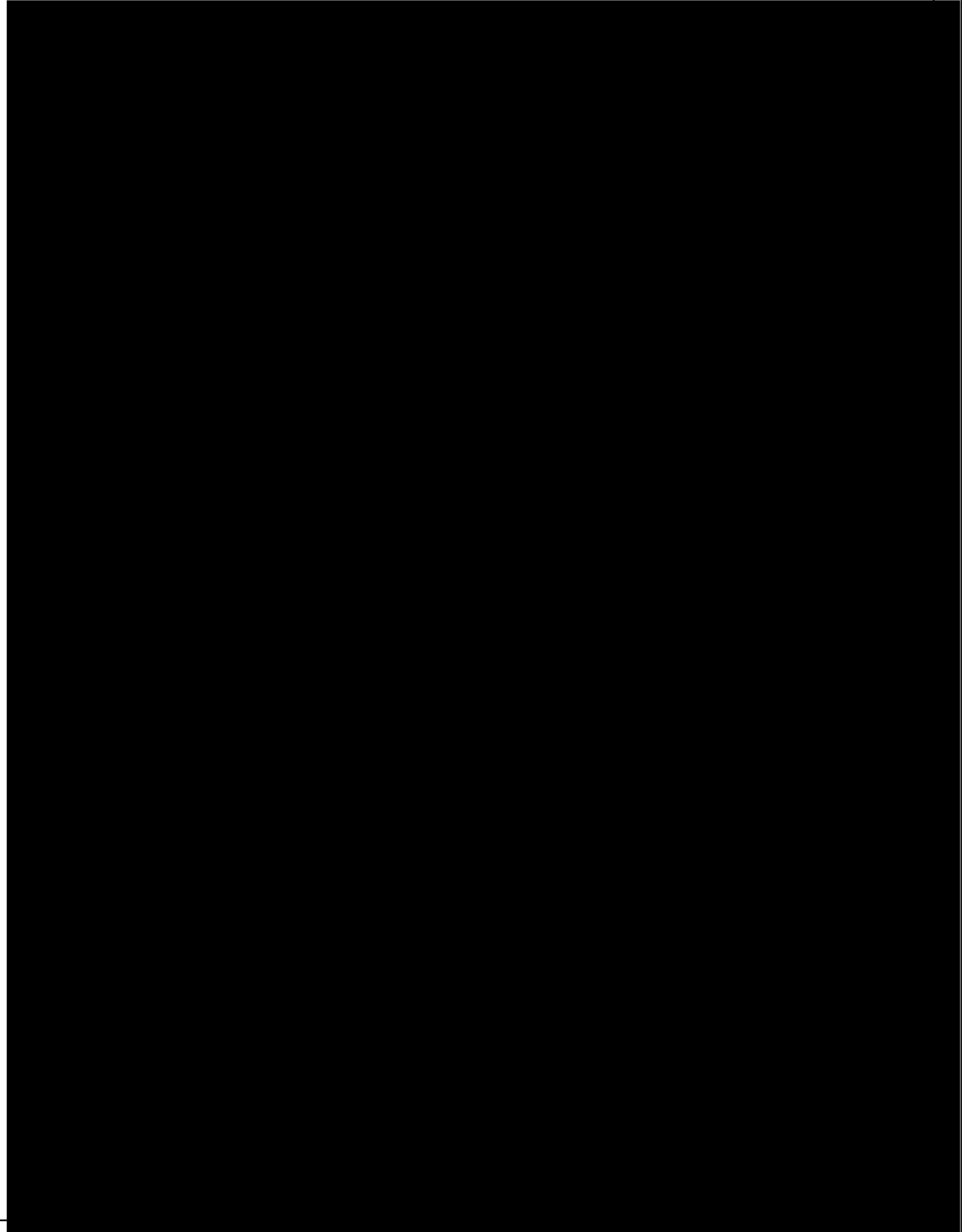
Neubau:  
landw. Lagerhalle  
380,00m<sup>2</sup>  
±0.00 = 443,75m üNN

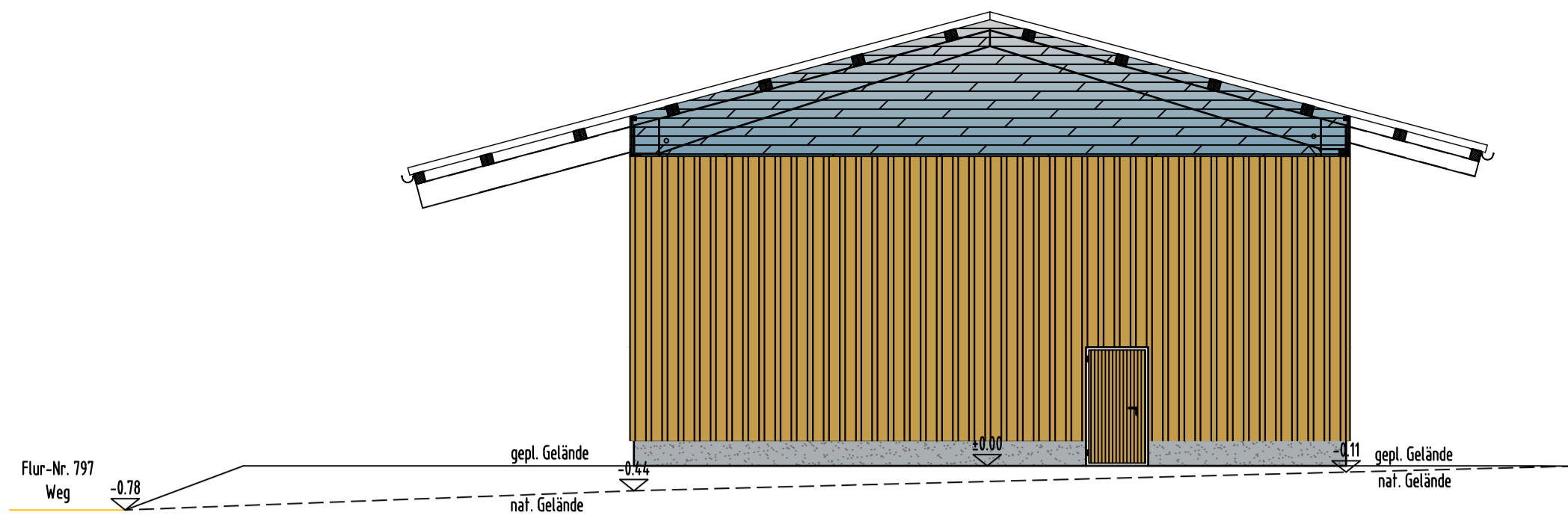


Regenwasser wird in die gepl.  
Zisterne (Notüberlauf an vorh.  
Graben) geleitet.

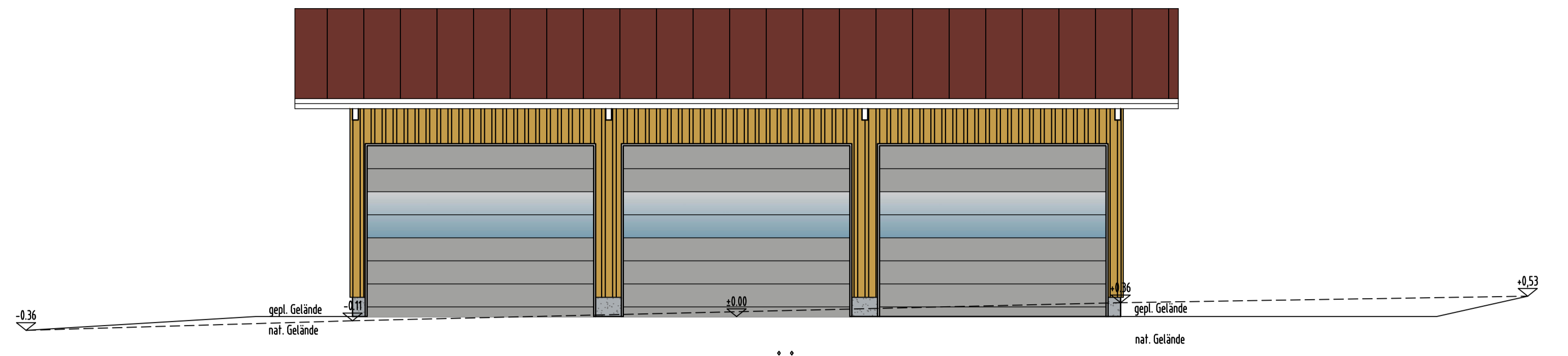
# EINGABEPLAN

Neubau einer landw. Lagerhalle  
in Gemarkung Ittendorf  
Flur-Nr. 789

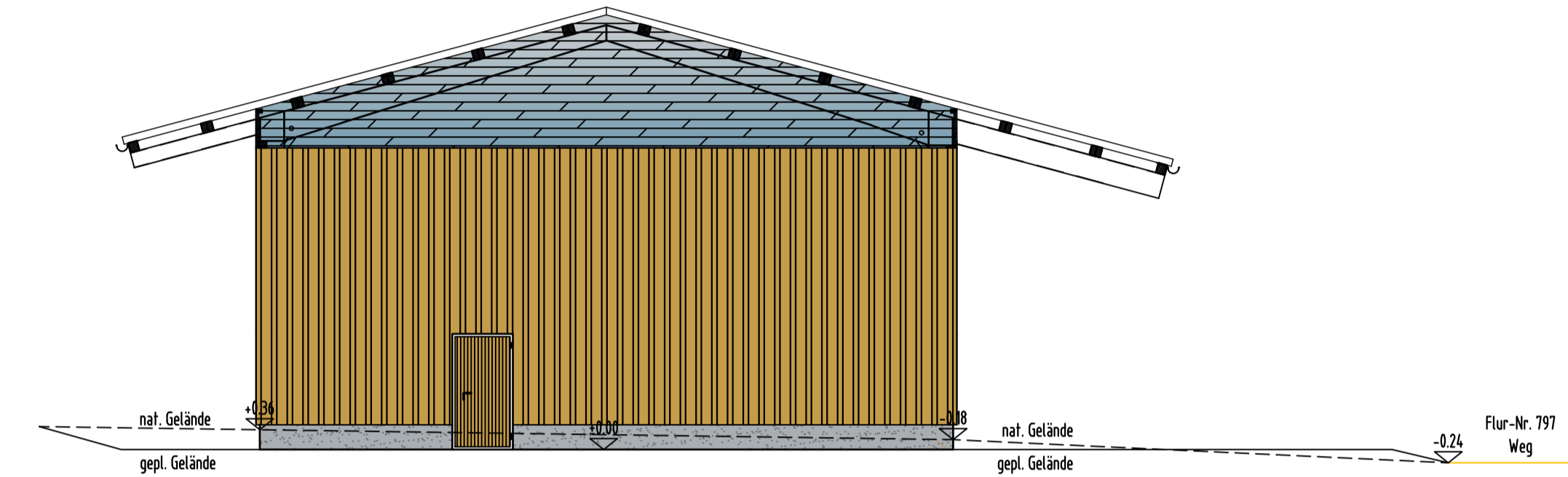




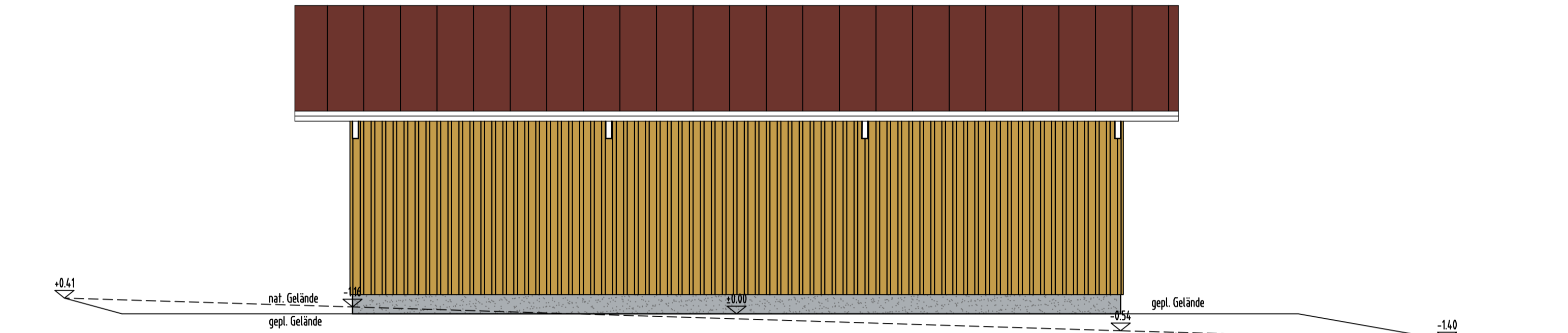
ANSICHT VON NORD-WESTEN



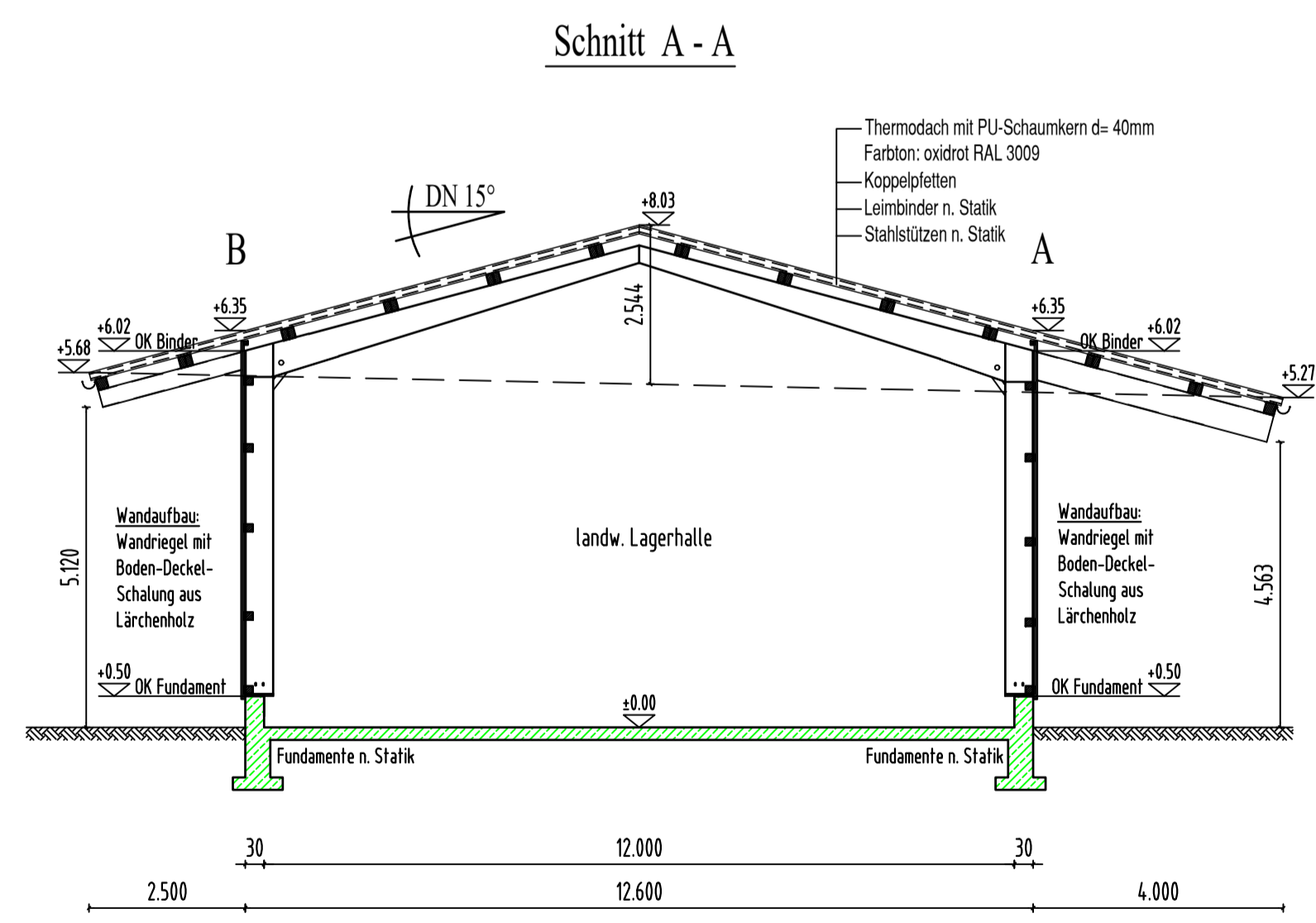
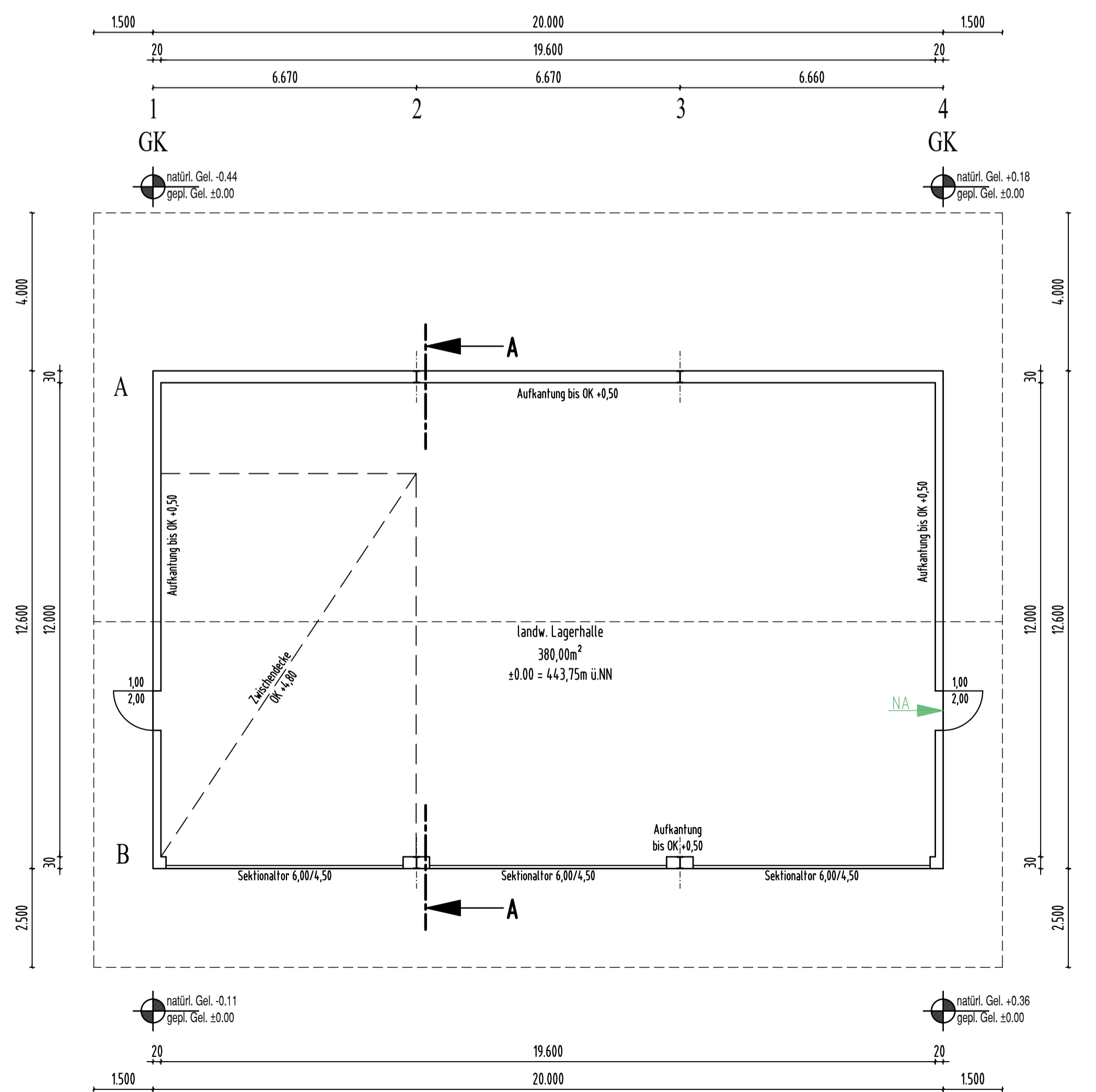
ANSICHT VON SÜD-WESTEN



ANSICHT VON SÜD-OSTEN



ANSICHT VON NORD-OSTEN



### EINGABEPLAN

Neubau einer landw. Lagerhalle  
in Gemarkung Ittendorf  
Flur-Nr. 789