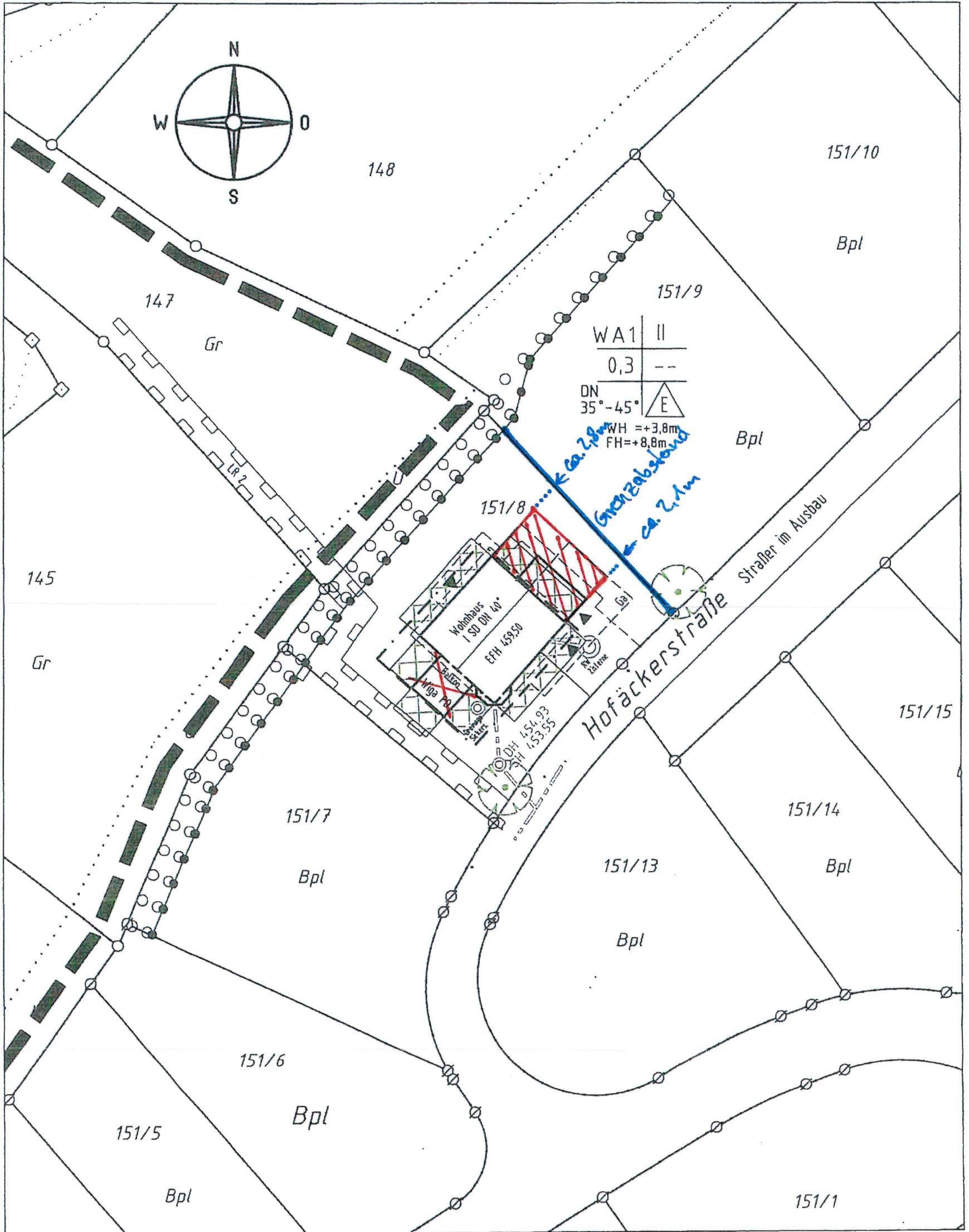
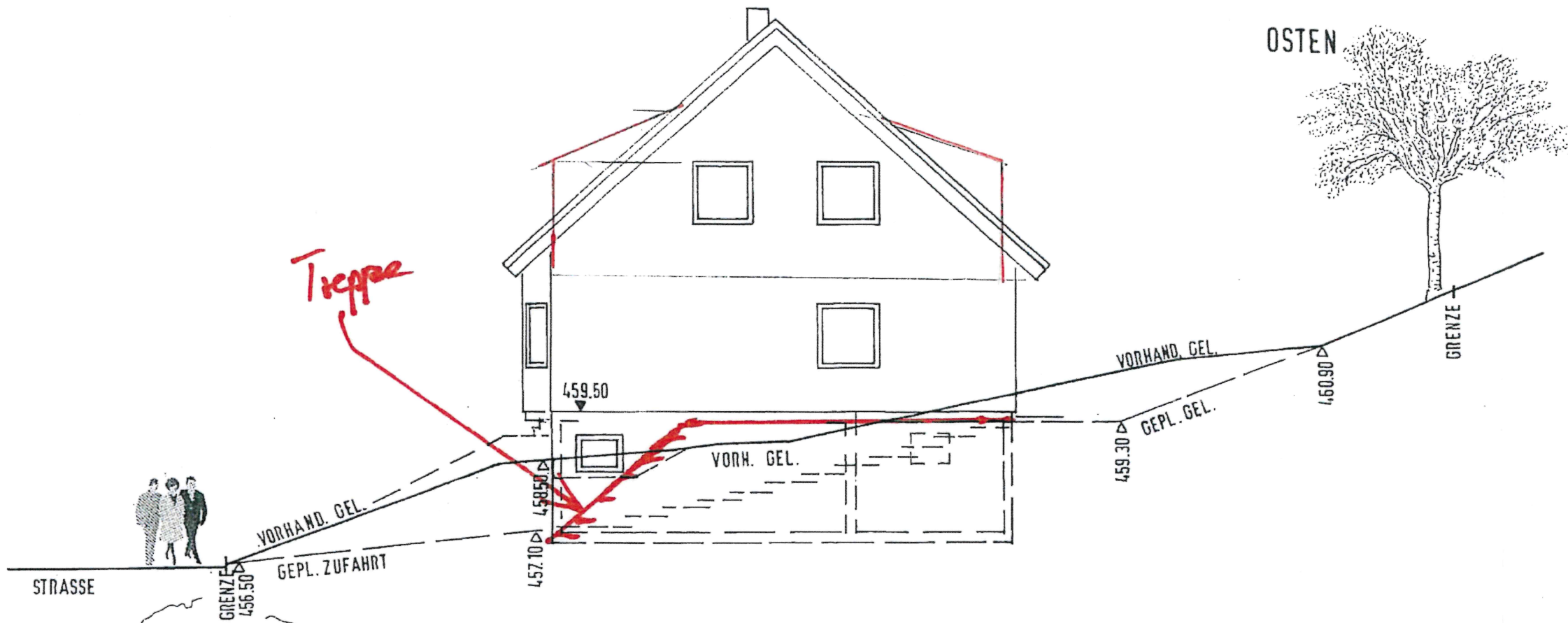


# LAGEPLAN

Darstellung der Abstandsflächen gem. § 4 (4) LBOVVO  
Gemarkung : Riedheim

Maßstab 1: 500





Treppe

OSTEN

GRENZE

VORHAND. GEL.

GEPL. GEL.

VORH. GEL.

VORHAND. GEL.

GEPL. ZUFABRT

STRASSE

GRENZE  
456.50

457.10

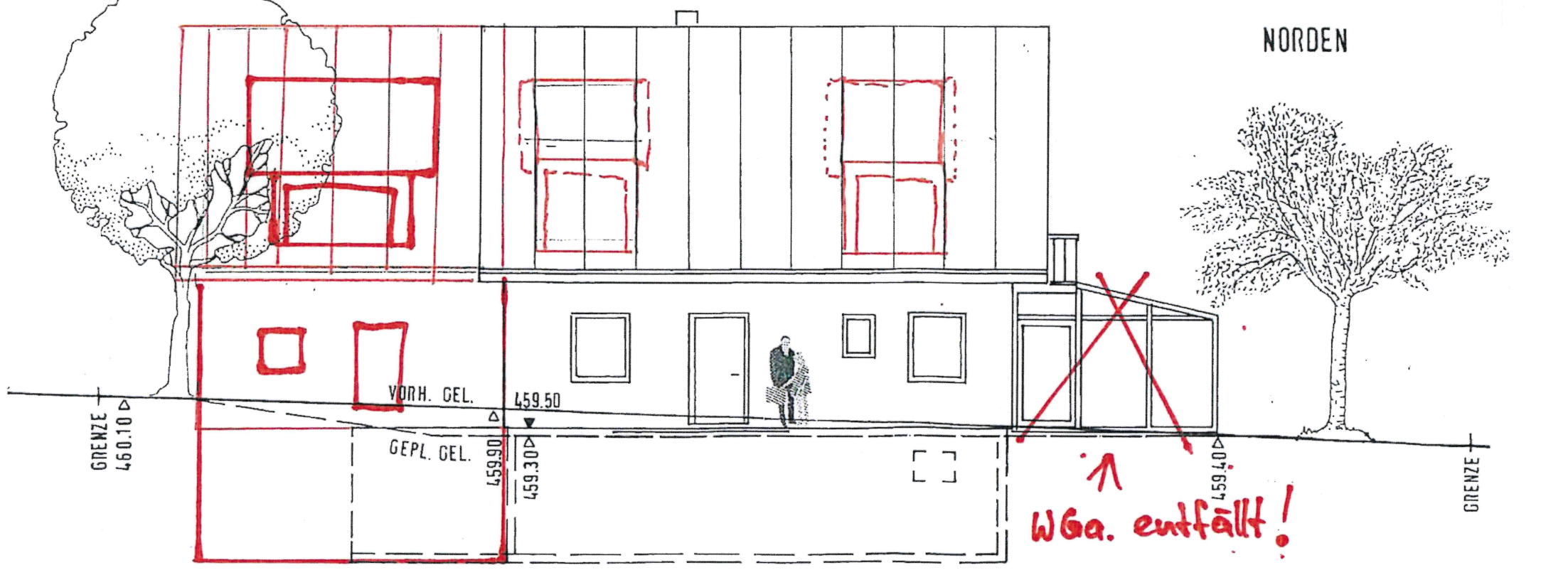
458.50

459.50

VORHAND. GEL.

GEPL. GEL.

460.90



NORDEN

GRENZE

GRENZE  
460.10

VORH. GEL.

459.50

GEPL. GEL.

459.90

459.30

459.40

WGa. entfällt!



